

# IRELAND'S plumbing & heating

ISSUE 112 - MAR/APR 2023

TRADE MAGAZINE - EST. 2002



## The Dream Team

For Commercial & Domestic Hot Water Solutions

Fast, Efficient and Sustainable Hot Water

copper industries

lb cylinders



# Keep heat pumps efficient and protected



## 108 ANTI-FREEZE VALVE

Prevents ice forming in heat pump systems, avoiding potential damage to the heat pump and to the pipes



Scan QR Code to learn more



Introducing the **NEW**  
108 ANTI-FREEZE VALVE  
c/w AIR SENSOR

[www.altecnic.co.uk](http://www.altecnic.co.uk)

For further details: [oemsales@altecnic.co.uk](mailto:oemsales@altecnic.co.uk) +44 (0) 1785 218208  
or Chris Reilly, Country Manager for Ireland,  
on 00353 (0)85 2152288, [chris.reilly@altecnic.co.uk](mailto:chris.reilly@altecnic.co.uk) or  
Gary Swann, Northern Ireland Sales Manager,  
on 07760 596727 or e-mail [gary.swann@altecnic.co.uk](mailto:gary.swann@altecnic.co.uk)



**altecnic**  
CALEFFI group

Issue 112 - MAR/APR 2023

# In this issue...



## News and views

- 5 Phoenix Natural Gas CEO retires**  
Michael McKinstry is retiring after being in the leadership team at Phoenix since 1996 and will be succeeded by Kailash Chada.
- 9 Shaky start for the new RGII**  
Latest news and views from the Amalgamated Heating and Plumbing Contractors Group.
- 14 Register now for Plumbex Belfast**  
Don't miss the chance to attend the largest trade event of the industry in March, featuring world-class exhibitors and exclusive talks from those in the know.

## Product news

- 10 Nothing but the highest standard**  
Copper Industries and LB Cylinders are guided by innovation, research and modern technologies to manufacture and supply hot water cylinders, calorifiers and buffer tanks.
- 65 Case study: Kinnegad, Co. Westmeath**  
When choosing a heat source for her new build, Emer Whelan opted for affordable new technology - Stanley's Split heat pump system.
- 71 Warmflow's Zeno heat pump is first choice for large new build project**  
Warmflow helps significantly boost the energy efficiency of a new build house, with the fitting of its new Zeno air source heat pump.

## In focus

- 16 AJ Plumbing new showroom in Ballynahinch**  
The respected bathroom and plumbing suppliers' new space features the latest trends and quality customer service.
- 26 Dream bathrooms come true**  
Our Bathroom special features the latest trends from celebrated brands..
- 77 Daikin expands heat pump production and training network**  
The expansion is part of the company's strategy for 2025 to meet the growing European demand for heat pumps by investing in local production capacity.

**THE TEAM:** Managing Director **Karen McAvoy**  
Editorial **Heather Campbell, Ana Corradini**  
Publication Manager **Jacqui Fairley**  
Advertising **Julie Patterson**  
Production Manager **Julie Anne Guiney**  
Digital Creative Manager **Jo Hendron** Design **Tomo Pattison**  
Digital Communications **Rachel Freeman**  
Accounts **Andrea Simpson** Photography **Gordon McAvoy**  
Printed by **W&G Baird**

**CONTACT US:**  
The Forge, 13b Lisburn Road,  
Moira, Co. Armagh BT67 OJR  
**T: Moira:** 028 9261 2990  
**T: Dublin:** 01 696 8319  
**E:** [plumbing@kmp ltd.co.uk](mailto:plumbing@kmp ltd.co.uk)  
**www.plumbingmag.com**

**FOLLOW US ON:**

 plumbing & heating magazine @plumbingmag

 plumbing & heating magazine @plumbingmag

 plumbing & heating magazine @plumbingmag

 plumbing & heating magazine @plumbingmag

Plumbing & Heating Magazine is published on a bi-monthly basis and distributed throughout Northern Ireland and the Republic of Ireland on a controlled circulation.





## GRANT LAUNCHES NEW EZ-FIT FLUE GUIDE

Leading heating technology manufacturer Grant has launched its brand-new EZ-Fit Flue guide for heating engineers and installers to provide instructions on the specific flues required for the Grant Vortex and Euroflame boiler ranges. The downloadable guide has been developed by the Grant technical team and provides a detailed breakdown of the wide range of flues designed for use with Grant's Vortex and Euroflame boilers. As the flue is an important component of all boiler installations, those in the heating trade must have all the required information to ensure the correct flue is selected for the right boiler model and to install and maintain it correctly. The new EZ-Fit Flue guide contains in-depth details and instructions on low-level and high-level flue systems, part reference guides and imagery of the specific flues used on each boiler model, among other key information.

For more details on Grant's new EZ-Fit Flue Guide, visit [www.grantengineering.ie](http://www.grantengineering.ie) - [www.grantni.com](http://www.grantni.com)

## KELSO AGENCIES APPOINTS NEW SALES REPRESENTATIVE

Ricky Higgins is the new sales representative for Kelso Agencies. Ricky is joining the Carrickfergus-based plumbing, heating and bathroom distributors after having worked also in sales at Phoenix Natural Gas. "I completed my apprenticeship in plumbing and stumbled upon the world of sales by chance, while working for a friend's company," he explained. "I discovered it was something I felt more passionate about and really enjoyed sales." Having been appointed at the beginning of 2023, Ricky is now on the road with Kelso Agencies meeting all their customers. "It is all very exciting, and I hope to grow sales with new product launches in 2023 while doing my best to maintain and support our existing customer base," he commented.

[www.kelsoagencies.com](http://www.kelsoagencies.com)



Ricky Higgins, Kelso Agencies new Sales Representative.



## HAVE YOUR SAY ON THE REVISION OF DOMESTIC GAS INSTALLATIONS

Don't miss the opportunity to review and comment on the main guide for registered gas installers. The draft revision of I.S. 813 - Domestic gas installations (Edition 4) was placed under public consultation last December and the deadline to have your say is March 3.

The Standard provides for the installation of natural gas or liquefied petroleum gas in domestic dwellings, from the point of delivery to the gas appliance. The guide includes the requirements for installation of appliances and associated pipework, LPG cylinders and intermediate pressure LPG systems from the point of delivery, purging of air from, and the admission of gas to pipework installations and their handover to the operator, safe operation and maintenance of installations in use and many other situations installers deal with daily.

The draft is available at [www.nsa.ie](http://www.nsa.ie)





L-R: Michael McKinstry and Kailash Chada, new CEO of the Phoenix Group.

## PHOENIX NATURAL GAS CEO RETIRES AFTER 27 YEARS IN THE BUSINESS

Michael McKinstry is retiring as CEO of the Phoenix Group. Michael is one of the longest-serving members of the NI gas industry, having been in the leadership team at Phoenix since 1996, initially as CFO and since 2014 as CEO. Michael will be succeeded by Kailash Chada, the current CFO at Phoenix. Kailash Chada takes up his new role on April 1. Michael's career in the gas industry coincided with a period of considerable greenfield investment, during which time Phoenix constructed a pipeline infrastructure to deliver gas to over 350,000 properties.

Chair of Phoenix Group, Peter Dixon said, "I am confident that Kailash will build on the great success achieved under Michael's distinguished leadership. At a time when there are significant opportunities for the energy sector to develop alternative renewable solutions from increasingly indigenous production sources, Kailash's determination and drive will be key assets in leading Phoenix through its next phase of growth and development."

[www.phoenixnaturalgas.com](http://www.phoenixnaturalgas.com)

## NI WATER'S BALLYKELLY WASTEWATER PROJECT TEAM RECEIVES AWARD

NI Water's project team working on the new Ballykelly Wastewater Treatment Works has been awarded the Institution of Civil Engineers (ICE) NI Sustainability Award. The award is presented to projects that demonstrate sustainability through innovation and is the third honour received by the project, with recent wins at the Green Apple Awards and the Construction Excellence Awards, organised by the Construction Employer's Federation (CEF). NI Water's CEO Sara Venning commented, "The Ballykelly project involved utilising more eco-friendly wastewater treatment approaches, including reed beds and maximising the use of renewables as part of the treatment process. This forward-thinking design will provide a natural, long-term and resilient solution for customers in the Ballykelly area well into the future. "As custodians of the environment, we are proud of the work completed at the Ballykelly plant and look forward to continuing a similar approach on other schemes across NI as we continue our ambitions to pursue a net zero sustainable future!"

[www.niwater.com](http://www.niwater.com)



L-R: Cillian Ward BSG, Sara Venning CEO of NI Water, Ryan Murray RPS, Mark Brownlee, Mark Mitchell and Kieran Grant of NI Water pictured at the Institution of Civil Engineers (ICE) NI Sustainability Award.



Eamon Leonard is pictured (right) receiving his tickets at Dublin Providers Ltd from John Finn, Sales Executive at Wavin Ireland.

## GALWAY PLUMBER WINS WITH WAVIN

Eamon Leonard, a third-generation plumber from Leo Leonard Heating & Plumbing Contractors, Galway, was the winner of the recent 'Win with Wavin' installer promotion. He won two VIP match tickets to the Ireland x Scotland Six Nations Championship game at Murrayfield, on March 12. Eamon received his tickets at Dublin Providers Ltd from John Finn, Sales Executive at Wavin Ireland. 'Win with Wavin' focused on Wavin Hep20 push-fit fittings and soil and waste products. The promotion was held during a series of visits to builders' merchants during November and December 2022. [www.wavin.com](http://www.wavin.com)



# SCALA1

## GETTING WATER ON DEMAND HAS NEVER BEEN EASIER

2 Year Warranty

Grundfos SCALA1 is an all-in-one pressure boosting unit with a high-efficiency motor and hydraulics with low noise operation for domestic water supply and also light commercial applications. Built-in Bluetooth communication gives you complete control over the pump using the Grundfos GO REMOTE.

Installation and commissioning has never been easier. The Grundfos GO REMOTE app also lets you see alarm status and get easy pump diagnostics. You can create and email reports onsite and access hard-to-reach installations remotely from the app.

### MQ REPLACEMENT

SCALA1 is the smaller, quieter replacement for the discontinued MQ booster pump.



SCAN HERE TO  
LEARN MORE

### TWIN ACCESSORY KIT

Enables you to connect two SCALA1 pumps in duty/standby or duty/assist mode.



## PRESSURE BOOSTING, CONTROL AND WATER SUPPLY MADE EASY

### ALL-IN-ONE BOOSTER UNIT

Complete all-in-one unit, integrating pump, motor, diaphragm tank, pressure and flow sensor, dry-running protection, controller and non-return valve provides you with optimal pressure boosting for water on demand and intelligent pump control.

### INSTALLATION AND COMMISSIONING

Save time installing SCALA1 – simply connect the pipes, prime the pump and plug it in. For fast and easy commissioning, configure the pump quickly and intuitively directly from the pump control panel.

For more advanced settings you can use the Grundfos GO REMOTE app and follow the guided online configuration.

### EASY TWIN PUMP CONTROL

Built-in multi-pump/booster technology enables twin pump connection with joint pump control in either duty/assist or duty/standby mode. Online configuration is done easily using the Grundfos GO REMOTE app, where you can also adjust the alternation setup.

### MULTIPLE MODELS AVAILABLE

The SCALA1 comes in three sizes:  
3-35 = 35m head or 3.5 bar pressure  
3-45 = 45m head or 4.5 bar pressure  
5-55 = 55m head or 5.5 bar pressure

For more information scan the QR code above, or visit [grundfos.ie/scala1](http://grundfos.ie/scala1).

**GRUNDFOS** 

Possibility in every drop



GRUNDFOS SCALA1 BOOSTER PUMP PROVIDES IDEAL CHOICE FOR BOOSTING HOMEOWNERS' GARDEN PRESSURE...

## Grundfos 'plug and pump' up pressure in the garden

Many homeowners have learned to live with poor garden water pressure because they do not think the problem can be solved, or because they expect it will require many days of expensive plumbing work. But the introduction of the SCALA1 to the range of Grundfos SCALA booster pumps intends to change all that. The Grundfos SCALA1 is a fully integrated 'plug and pump', all-in-one, self-priming, easily installed compact pump for domestic and light commercial applications, for pressure boosting to family homes and apartments and also for garden irrigation.

"If your customers are experiencing noise from their booster systems in the home or garden, it is often due to poor pump technology or poor pump control. These issues are easily solved with a Grundfos SCALA1 pump, which with its unique, water-cooled motor features, decreases the pump noise level by 6 dB (A), thus reducing the sound level of the pump by half, as well as reducing vibration in the pressure boosting system," explained Ray Broughan, Sales Engineer at Grundfos.

### ADVANCED PROTECTION FOR PEACE OF MIND

SCALA1 incorporates advanced protection features to give the installer and homeowner peace of mind. Dry running protection automatically stops the pump in case of water shortage. Cycling protection prevents the pump starting frequently in case of minor leakages in installation and

maximum runtime protection can stop the pump after a desired period of continuous operation, preventing potential flood damage in case of pipe breakages. Also, the pump has a built-in motor protection that will stop the pump if exposed to excessive temperatures due to high ambient temperatures, in case of seizure or overload, thus preventing a motor burnout.

### SCALA GOES DIGITAL WITH BLUETOOTH

A welcome addition, the SCALA1 includes Bluetooth connectivity. This allows for faster setup, monitoring, troubleshooting and control of the SCALA1 from your smartphone via the Grundfos GO Remote app. The app also makes for easy setup using the SCALA1 as a twin-booster system, operating as duty/standby as well as duty/assist.

The SCALA1 requires no maintenance, but it is recommended to keep the pump clean, check the non-return valves and keep the ventilation holes free of dust.



To find out more about the SCALA1 booster pump, speak to your Grundfos account manager or visit [www.grundfos.ie/scala1](http://www.grundfos.ie/scala1)

Introducing the SCALA1 booster pump from Grundfos.



"SCALA1 incorporates advanced protection features to give the installer and homeowner peace of mind."

# FIT WITHOUT THE FIDDLE

Fitting Glow-worm boilers is a faff-free experience. A compact design makes them easy-to-install, even in cosy spaces like kitchen cupboards. Thanks to universal flue systems, diagnostics, controls and accessories, once you've fitted one model, you've fitted them all, and you can be in and out in a flash.

Check out our full range of reliable and affordable boilers at [glow-worm.co.uk/glowing](http://glow-worm.co.uk/glowing)







COPPER INDUSTRIES AND LB CYLINDERS ARE GUIDED BY INNOVATION, RESEARCH AND A COMBINATION OF TRADITIONAL SKILLS AND MODERN TECHNOLOGIES TO MANUFACTURE AND SUPPLY HOT WATER CYLINDERS, CALORIFIERS AND BUFFER TANKS...

# Nothing but the highest standard



Copper Industries and LB Cylinders are the UK and Ireland's largest independent suppliers and manufacturers of standard and bespoke hot water cylinders, calorifiers and buffer tanks, and have over 30 years of experience in the trade. With technical support from in-house plumbing professionals, the companies manufacture top-quality products at their state-of-the-art facilities in Toome and Bray.

## RESEARCH AND DEVELOPMENT

Alongside their dedicated manufacturing and customer support teams, Copper Industries and LB Cylinders owe their success to the Research and Development arm of the business, as product innovation is a top priority. Long before sustainability goals were discussed in mainstream media and the current cost of living crisis, the companies were always focused on making cylinders more energy efficient. Every aspect of product design, from the materials used for individual elements, such as the coil design, is created with energy efficiency in mind. The cylinders reduce the running costs for both domestic and commercial clients. This is possible due to the companies' scientific approach to research and development, always pushing the boundaries of what is achievable in cylinder design.



HWG installation at Titanic Belfast.

## TRUSTED CLIENTS

Cylinders manufactured by Copper Industries and LB Cylinders are installed at large companies and attractions across Ireland and the UK, such as Europe's leading poultry producers Moy Park and at Titanic, Belfast.

Their products are also trusted by dozens of hospitals throughout Ireland and the UK to provide safe drinking water. Protection against Legionella is important in any installation but especially at healthcare facilities.

The companies also supply merchants across Ireland and the UK. Copper Industries and LB Cylinders products are installed in thousands of homes, making them one of the most trusted hot water cylinder solutions on the market.



Unit 22, Block E, Southern Cross Business Park, Boghall Road, Bray, Co. Wicklow, A98 P990

T: +353 (0)1 201 4333

E: info@lbcylinders.ie





### ROBOTIC AUTOMATION AND TRADITIONAL COPPERSMITHING

At Copper Industries and LB Cylinders, old and new skills come together seamlessly in the manufacturing process to create the highest standards. Their primary focus is on supplying superior hot water cylinders and delivering the best quality and service. Every single cylinder is carefully crafted and double-checked to ensure 100% customer satisfaction.

The companies pride themselves as master coppersmiths and have an appreciation and love of the traditional craft, but innovation and R&D also live happily alongside their traditional methods.

Traditional skills can and should be celebrated and retained, and they have found a way to do this while at the same time benefiting from advancing technologies. In recent years, the companies have heavily invested in robotics and robotic automation within manufacturing. Their innovation, attention to detail and dedication to the quality of products have led to Copper Industries and LB Cylinders being awarded the internationally recognised ISO 9001 quality assurance certification, which ensures that products are manufactured to the highest standard and best practice governing the production of mild steel, stainless steel and copper cylinders.

### THE MAXIPOD

The companies' flagship product is acclaimed as the most sophisticated hot water cylinder on the market, with great speed and intelligence. The indirect cylinder provides a hot water system that delivers fresh drinkable cold and heated water straight to taps. The MaxiPod is both pressurised and vented to control any energy input, no matter what heat source is chosen by the homeowner, including solar energy, a multi-fuel stove, or a gas, oil or electric boiler.

Thermal stores like the MaxiPod do not need annual servicing like other hot water generators on the market. This saves money on servicing and eliminates the risk of boiler explosions. The MaxiPod is designed to keep the water constantly moving, thus reducing the cost of energy bills. This also significantly reduces lower standing heat loss, making it a more sustainable heated water provider, as energy created isn't lost.

The clever design means that fresh, hot water is always available on demand, and the system does not waste energy reheating the entire cylinder each time.

## LB Cylinders celebrates 10 years

Despite unprecedented market volatility over the last decade and particularly the last three years, LB Cylinders is not only surviving but thriving.

The company was established in 2013 to serve the Irish market. Its head office and manufacturing facility are based in Bray, County Wicklow. The LB Cylinders team has worked tirelessly over the last ten years to establish it as a market leader in Ireland.

Like the UK team based in Toome, their focus has been on innovation in product design and customer service. In just ten years, LB Cylinders has established itself as a trusted manufacturer and supplier of domestic and commercial hot water cylinders. Their products are installed in hundreds of commercial, healthcare and domestic properties all over Ireland.

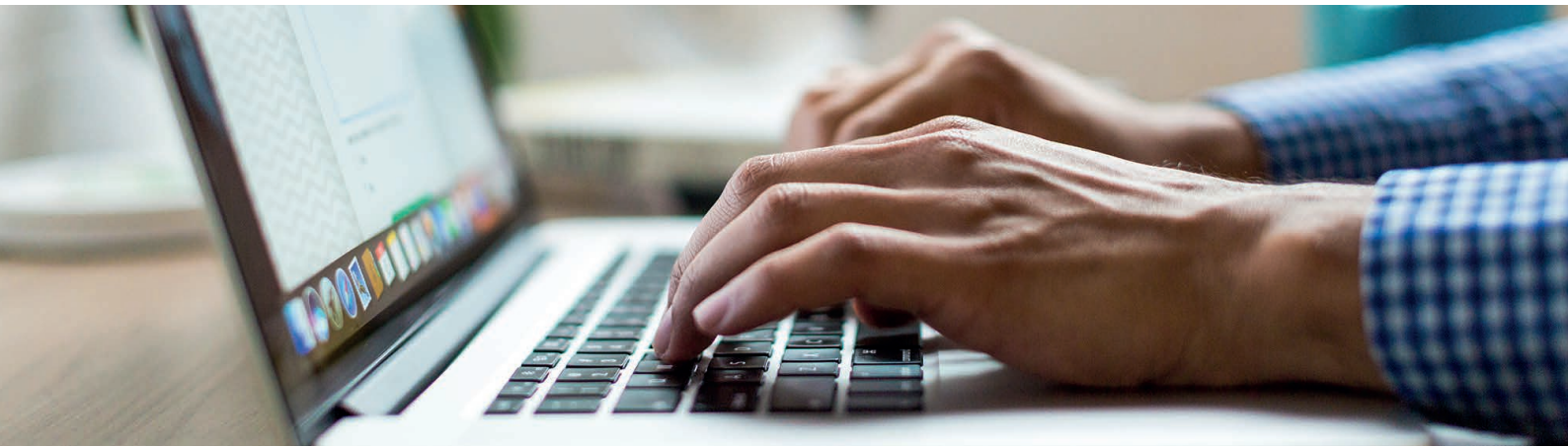


Celebrating 10 years of LB Cylinders.



Toome Business Park, 21 Hillhead Road, Toome, Co. Antrim, BT41 3SF  
 E: mail@copperindustries.co.uk - T: +44 (0)28 7965 9736  
[www.copperindustries.co.uk](http://www.copperindustries.co.uk)





MECHANICAL CONTRACTS MANAGER MATTHEW BOWDEN HAS RETURNED TO SERC TO TURN HIS WORK KNOWLEDGE AND EXPERIENCE INTO A LEVEL 6 QUALIFICATION...

## Building on a career with Professional Recognition Award

A South Eastern Regional College (SERC) alumnus has returned to the College – online – to turn his knowledge and experience from multi-million-pound projects in the construction industry into a Level 6 Professional Recognition Award, with the support of the College’s Business Services team. Matthew Bowden, a Mechanical Contracts Manager with Bellaghy-based FG Mechanical Building Services, first came to SERC following his GCSEs at Royal Belfast Academical Institution. “I knew I wanted to do a trade upon leaving school so I enrolled at my local SERC Campus in Newtownards, where I completed an NVQ Level 2 and Level 3 in Plumbing and Heating as part of my Apprenticeship. I was employed by the Harvey Group,” he explained. “I really enjoyed being hands-on, which suited my style of learning.” Matthew added, “On completion of my Apprenticeship, I was keen to gain further qualifications and enrolled on the HNC in Building Services, again at SERC’s Newtownards Campus, whilst working ‘on the tools’ with Harvey Group. The HNC helped me move into the office and to take those first steps into management. I have no doubt my experience as an apprentice working in offices, schools, healthcare and residential settings, backed up with the theory and knowledge gained on the HNC, helped me progress in my career.

“In my current position as Mechanical Contracts Manager with FG Mechanical Building Services, I manage the installation of plumbing, heating, ventilation and air conditioning systems both for new builds and refurbishments. Work can take me anywhere in the UK and Ireland, and I have been involved in projects in Belfast, Bristol and Dublin. I am currently working on a project of 193 new high-end apartments in Central London with a job value of £7million. “The most exciting part of working in this field is that every job brings its own unique challenges - you are learning all the time. This is what spurred me to find out about the City & Guilds Level 6 Professional Recognition Award. I am glad I went back to SERC, this time online, to gain the qualification. There was plenty of support and guidance to make you focus on all the knowledge and experience you have picked up over the years.” Matthew concluded, “Right now there is a shortage of young people coming through to work in specialist areas of construction and, with the right skills, experience and qualifications, the world is your oyster. I would certainly recommend the apprenticeship route as having a trade has opened so many doors for me. I have always found there are many opportunities in the industry for those who want them.”



Contracts Manager and SERC student Matthew Bowden.



INSPIRING. TRANSFORMING. ENRICHING.

Visit [www.serc.ac.uk](http://www.serc.ac.uk) to learn more.





# PLUMBEX

A BEPEX TRADE EVENT

**BELFAST**

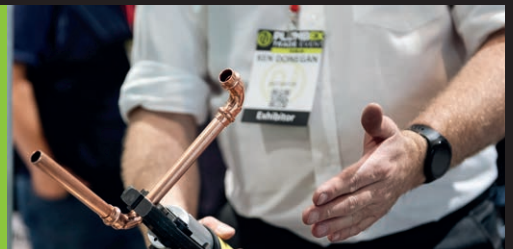
WED 29 MAR • 4PM - 9PM  
THURS 30 MAR • 9:30AM - 4PM  
TITANIC EXHIBITION CENTRE

## IT'S BACK...

AND IT'S NOT JUST AN EXPO - IT'S AN EXPERIENCE!

### MEET THE EXPERTS

EXCLUSIVE TALKS FROM THOSE IN THE KNOW, EXPERT ADVICE, DEMOS, VANS



### NOBODY LEAVES EMPTY-HANDED

**FREE** PARKING, FOOD & DRINK, TOOLS, GOODIE BAGS, MERCHANDISE

### WHAT'S ON?

SEMINARS, APPRENTICE CHALLENGES, GIVEAWAYS, SPECIAL OFFERS, PRIZES AND MUCH MORE!



**REGISTER FOR  
FREE ENTRY**  
TO ATTEND  
SCAN THE QR CODE

FOR FURTHER INFORMATION:  
**+44 (0)28 9261 2990**  
[www.bepex.ie](http://www.bepex.ie)

FOR LATEST UPDATES, KEEP AN EYE ON @PLUMBINGMAG SOCIAL PAGES





# Register now for PLUMBEX Belfast

DON'T MISS THE CHANCE TO ATTEND THE LARGEST TRADE EVENT OF THE INDUSTRY IN MARCH, FEATURING WORLD-CLASS EXHIBITORS AND EXCLUSIVE TALKS FROM THOSE IN THE KNOW...



**P**LUMBEX is back in Belfast! The one-of-a-kind event dedicated to the plumbing and heating industry in Northern Ireland happens every two years and will take place at the Titanic Exhibition Centre on Wednesday March 29 from 4pm to 9pm and Thursday March 30 from 9.30am to 4pm. Register right now at [BEPEX.ie](http://BEPEX.ie) for free entry and don't miss the opportunity to see a staggering collection of top-quality products and services as well as trade talks and special offers. It is also a great event to find out more about innovation and smart technologies in the sector. PLUMBEX is attended by plumbing and heating contractors and M&E engineers, gas installers, M&E consultants, training

facilities and education, health and government departments.

## MAKE A DAY OF IT

PLUMBEX offers a great opportunity to meet experts in the industry, keep an eye on the competition and make great deals. Enjoy the hands-on product demonstrations from our hundreds of exhibitors and check out the extensive display of tools and vans in our designated areas. Try your luck at the raffles and challenges and see why nobody leaves empty-handed – or without cool additions to their toolbox. Many exhibitors will be giving away freebies, from bags to screwdrivers. The new generation of the trade will also

have the chance to win top prizes at the Apprentice Challenges.

Watch out for the trade talk programme in our social media channels and book your place. Don't miss the opportunity to learn more about the future of the industry from our prestigious speakers. PLUMBEX offers free parking and lots of options for a snack, tea and coffee during your visit. Don't forget to pick up your voucher booklet on arrival to avail of all the gifts and offers at the event. PLUMBEX Belfast is an integral part of the Build Electrical Plumbing Expo (BEPEX) at the Titanic Exhibition Centre. The show is held every two years and brings together three major trade events under one roof: BUILDDEX, ELECTEX and





PLUMBEX. BEPEX 2023 will showcase thousands of brands offering modern construction methods and innovative products to contractors and construction professionals. It is the must-attend event for anyone involved in the plumbing, mechanical, electrical and building sectors in Northern Ireland.

MEET THE EXPERTS IN...

Bathrooms · Boilers · Boosting & Circulating Pumps · Finance · Fleet Management · Health & Safety · Heat Pumps · LPG Supply · Pipes, Valves & Fittings · Plant Hire · Renewables · Smart Controls · Smart Technology · Software · System & Water Treatment · Tools & Testing Equipment · Training · Underfloor Heating · Van Outfitters · Van Wrapping · Vans · Workwear · and much more.

**DON'T JUST TAKE OUR WORD FOR IT**

Scan to watch highlights of our previous event!



**REGISTER**

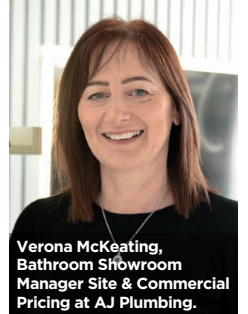
For more details on the show and to register for **FREE** entry, go to **BEPEX.ie**





THE RESPECTED BATHROOM AND PLUMBING SUPPLIERS' NEW SPACE FEATURES THE LATEST TRENDS AND QUALITY CUSTOMER SERVICE...

# AJ Plumbing celebrates new showroom in Ballynahinch



Verona McKeating, Bathroom Showroom Manager Site & Commercial Pricing at AJ Plumbing.

Bathroom and plumbing suppliers AJ Plumbing has just presented their newly refurbished showroom at the Ballynahinch branch. After 11 months of hard work, the new space now features baths, showers, furniture, ceramics, LED mirrors, heated towel rails, taps, accessories and tiles, all readily available from established brands and following the hottest trends for the bathroom market in 2023. The Ballynahinch team offers the outstanding customer service that AJ Plumbing clients have grown accustomed to during the company's 44 years of operation both here and in the other three

branches in the South Down area: two in Newry and one in Banbridge. Founded in 1996, the branch has been through several transformations, especially to expand its warehouse. "With the increase in plumber and customer business we thought it was time to renovate and extend the showroom to meet both plumber and private customer expectations," commented Clifford O'Brien, Director at AJ Plumbing. "AJ's has gone from strength to strength over the last four decades, and now our products and customer service can be offered to private and commercial customers and

hoteliers not only in Newry and Banbridge but also in Ballynahinch," explained Verona McKeating, Bathroom Showroom Manager Site & Commercial Pricing. The upper floor is dedicated to commercial projects, while the downstairs displays AJ Plumbing's residential lines. The overall look is the result of the teamwork between Director Jonathan O'Brien and his eye for high-end product and unique designs, Sales Design Consultant Francis McGivern and the sales team. "We follow the market trends and deal with established, reliable suppliers with whom we have established lasting relationships to ensure that we are



"You can ring any member of staff and they will do their utmost to deal with your request."





(L-R) Directors Clifford O'Brien, Jim O'Brien and Jonathan O'Brien.

not only selling good quality products but also parts and guarantee," Verona commented.

#### QUALITY CUSTOMER SERVICE

"Our customers are blown away by the new showroom, and a lot of new customers said they had been recommended by friends," Clifford explained. According to Verona, what really makes a difference is the quality customer service offered at AJ Plumbing, "It all comes down to customer service, you don't get that kind of communication online. You can ring any member of staff and they will do their utmost to deal with your request."

That rapid growth can be attributed to the company ethos, which remains as true today as it did 44 years ago - the customer is number one, no matter what. "It's a family-run company, and their family values remain true today. The staff know the business inside out and newcomers

are trained in the same core values," she added.

The demand for AJ Plumbing in the area they cover has grown, and clients often comment on how the quality of customer service draws them back every time. "The customers are at the very heart of AJ, and that is why they have been coming back to us for the past 20 years," Verona said.

AJ Plumbing also caters for all plumbing and heating needs and delivers all over Ireland, North and South.

#### HUMBLE BEGINNINGS

AJ Plumbing Supplies Ltd was established in 1979 by Jim O'Brien. He started working from a couple of small sheds at his parents' home in Newry before building a property to accommodate plumbing materials and a bathroom showroom. It wasn't long before the company had outgrown its limited space, and AJ Plumbing's headquarters were founded in the Greenbank Industrial Estate. The Banbridge and Ballynahinch

branches opened their doors in 1996 and Elite Bathrooms, also in Newry, in 2005. AJ Plumbing's impressive growth over the past 44 years can be attributed to Jim's commitment to the customer and his insistence on a diverse stock. "Our father always says, carrying the right stock is the key to success. A lot of our customers return to AJ Plumbing because of the large range of stock we carry," said Clifford O'Brien, Director at AJ Plumbing.

#### COMMERCIAL SUCCESS

Verona is also happy to report AJ Plumbing has worked on several prestigious projects in the hotel business, such as Carrickdale Hotel & Spa in Dundalk, the Kileavey Castle Hotel in Armagh, the Four Seasons Hotel & Leisure Club in both Monaghan and Carlingford and the new boutique Avoca Hotel in Newcastle. AJ has also delivered several office blocks in Dublin and, most recently a 500 bed student accommodation in Leopardstown.

AJ Plumbing Supplies Ltd, 45 Lisburn Rd, Ballynahinch, Co. Down, BT24 8TT.

T: +44 (0)28 9756 4636 - E: info@ajplumbing.co.uk

[www.ajplumbing.co.uk](http://www.ajplumbing.co.uk)





We are plumbing, heating and bathroom distributors of market leading brands including McAlpine, Wirquin, Lecico Bathrooms, Abacus Bathrooms and many more.

 [www.kelsoagencies.com](http://www.kelsoagencies.com)

 [sales@kelsoagencies.com](mailto:sales@kelsoagencies.com)

 +44 (0)28 9336 6560

 14L Kilroot Business Park, Larne Road, Carrickfergus, BT38 7PR







Plumbing • Heating • Bathroom • Distributors

SUPPLYING QUALITY BATHROOM PRODUCTS TO AJ PLUMBING SUPPLIES.

# AMAC

Building Ltd

NEW BUILDS | PROJECT MANAGEMENT  
 HOME EXTENSIONS & CONVERSIONS  
 PROPERTY REFURBISHMENTS  
 FACILITY MANagements

Amac building ltd would like to wish AJ plumbing and its staff all the best with their new showroom. I have no doubt it will add to the continuing growth of the company. I would personally like to thank Jim, Clifford & Jonny for appointing us to build it - we thoroughly enjoyed the challenge.

- Aiden McCabe

07845 494 123 | [amcbuildingdreams@gmail.com](mailto:amcbuildingdreams@gmail.com)

[www.amacbuildingltd.co.uk](http://www.amacbuildingltd.co.uk) 



## MYLIFE™

PROUDLY SUPPLYING  
QUALITY BATHROOM  
PRODUCTS TO RETAILERS  
ACROSS UK & IRELAND

UK: +44 (0) 28 3025 6392  
ROI: +353 (0) 48 3025 6392  
[www.mylifebathrooms.com](http://www.mylifebathrooms.com)














The dream team at AJ. Pictured standing (L-R): Sales Consultant Trevor Burtney, Ballynahinch Showroom Manager Colin Smyth, Ballynahinch Branch Manager Patrick Lowry, Plumbing and Heating General Manager Allan Gough, Company Secretary Geraldine Kelly, Sales Design Consultant Francis McGivern, Director Jonathan O'Brien, Director Clifford O'Brien and Office Administrator Grainne Moffett. Pictured seating (L-R): Sales Consultant Joanne Skillen, Director Jim O'Brien and Bathroom Showroom Manager Site & Commercial Pricing Verona McKeating.

MEET THE KNOWLEDGEABLE STAFF THAT KEEPS THE BALLYNAHINCH BRANCH'S NEW SHOWROOM UP AND RUNNING...

## Dream team

AJ Plumbing has come a long way since Jim O'Brien's sheds at his parents' home, but the company ethos which Jim instilled from the very beginning remains today: put the customer first, deliver the best possible service and know your product.

The team that keeps the new space in Ballynahinch up and running personifies those values every day. Bathroom Showroom Manager Colin Smyth has been with the company since 2007.

"His customer service is exceptional and enthusiasm for the new showroom will ensure the branch's continuous growth," commented Verona McKeating, Bathroom Showroom Manager Site & Commercial Pricing at AJ Plumbing.

Trevor Burtney is a Sales Consultant with extensive experience in both tiles and sanitary ware. He has worked in the industry for over 30 years and has been with AJ Plumbing since 2019. Verona was all praise: "He is a strong and extremely

valuable team member," she said.

Sales Consultant Joanne Skillen joined AJ Plumbing in October 2022, having previously worked in the bathroom industry from 1996 to 2009. "Being back to what she excels in is fantastic for AJ Plumbing, as we already can see her strengths," Verona stated. "We are delighted to have Joanne on board." Patrick Lowry is the Ballynahinch Branch Manager. Paddy has been in the plumbing industry for 28 years and joined AJ Plumbing in 2020, at a time when the industry faced numerous new challenges imposed by the Covid pandemic.

"His vast experience within the plumbing industry and leadership, planning and coaching skills are excellent. In a short space of time, he has already taken the branch to a new level," Verona commented. "With Paddy at the Ballynahinch helm, we believe the future is bright for the branch."

## Four choices in South Down

» Located at 45 Lisburn Road, the Ballynahinch branch of AJ Plumbing opens from 8 am to 5 pm from Monday to Friday. The branch opens until 8 pm on Thursdays and on Saturdays from 9 am to 1 pm. AJ Plumbing offers three other showrooms in Northern Ireland: the headquarters in Newry, the branch in Banbridge and AJ's Elite Bathrooms, founded in 2005 also in Newry. Elite Bathrooms is a modern showroom focusing on the middle to the upper market range and specialising in main leading brands such as Villeroy & Boch and Hansgrohe. The company's commitment to sourcing the most innovative products has led to both repeat business and a continued flow of new clients.

AJ Plumbing Supplies Ltd, 45 Lisburn Rd, Ballynahinch, Co. Down, BT24 8TT.

T: +44 (0)28 9756 4636 - E: info@ajplumbing.co.uk

[www.ajplumbing.co.uk](http://www.ajplumbing.co.uk)



**AJ PLUMBING  
SUPPLIES LTD.**

EST. 1979




*Wishing the team continued success from everyone at Flair*

**GOOD DESIGN**



**flair**  
Telephone +353 42 966 8000  
Email sales@flairshowers.com  
**FLAIRSHOWERS.COM**



**Villeroy & Boch TwistFlush.**  
**More Power. Less Water.**

Villeroy & Boch TwistFlush's clever vortex technology, delivers more cleaning power, whilst using less water, and generating less noise.

**Why not discover V&B TwistFlush for yourself today, at AJ Plumbing & Bathrooms, Ballynahinch?**

**Kernohan DISTRIBUTION** | **Ian A. Kernohan (N.I.) Limited**  
Fir Trees Greenway Industrial Estate Conlig Co. Down BT23 7SU  
T: 028 9127 0233 E: info@iakonline.co.uk W: www.iakonline.com



**MULTIPANEL®**  
*Choose a modern alternative to tiles*

- Easy cleaning - just wipe down
- Discreet watertight joint with Hydrolock®
- 100% recyclable
- Can be installed 5x faster than tiles
- Can be installed over old tiles
- Grout free installation

**NOW WITH A 30 YEAR WARRANTY**

**FSC**  
www.fsc.org  
FSC® C128180  
The mark of responsible forestry

**Save time and money with Multipanel**

**Find out more**



multipanel.co.uk





AJ PLUMBING OFFERS THE LATEST WORD IN PRODUCTS AND STYLES, AND CLIENTS CAN AVAIL OF STATE-OF-THE-ART TECHNOLOGY TO REIMAGINE THE BATHROOM OF THEIR DREAMS...

## The latest trends

AJ Plumbing's showroom in Ballynahinch offers well-established brands such as MyLife Bathrooms, Hansgrohe, Geberit, Villeroy & Boch, Duravit, Neptune Bathing, Merlyn Showering and a vast number of others. All products are carefully curated to offer the best quality and follow the latest trends. "A lot of people are going down the more contemporary route, with wall-hung toilets and vanity units, but we cater for all styles: from the basic and budget options to traditional and modern styles," explained Verona McKeating, Bathroom Showroom Manager Site & Commercial Pricing at AJ Plumbing. Bathroom trends for 2023 still include colourful basins and matching bathtubs, brass, black, bronze and pewter finishes for showers, and wet rooms and walk-in showers. "We also cater for the needs of the less able and offer walk-in baths

and accessible showering, all beautifully displayed in our Newry showroom, to ensure everyone's needs are met." The only 4D Theatre in Northern Ireland, AJ Plumbing also offers full design and consultation services to ensure every customer achieves the look and functionality of their bathroom exactly as they imagined it. After a lot of consideration, Director Jonathan O'Brien saw the need for an immersive experience. Clients are able to view their room in a 4D Theatre, a service offered exclusively by AJ Plumbing in Northern Ireland. "We initially meet up with the client in any branch to help them pick colours, styles and products and draft the first drawings," explained Sales Design Consultant Francis McGivern. Then, the design team meets the client again at the 4D Theatre at AJ's Elite Bathrooms in Newry. The branch features a dedicated area where

customers can walk around and view their design wearing a VR Headset. "The 4D Theatre allows the client to fully view their room in three or four different options. This really gives them a real sense of space and makes the process of choosing products more exciting and much easier," Francis commented.

**EXCITING NEWS ON THE WAY** The Banbridge branch showroom will be the next one to receive a makeover. "We are in the design stage for a total refurb to bring it to the quality level of the new showroom in Ballynahinch," Director Clifford O'Brien continued. He revealed they are also planning some exciting news for the Newry showroom, with details to come soon. "Our plan is to continue to grow and provide the best product, price, and customer service throughout Northern Ireland and the ROI," he added.

AJ Plumbing Supplies Ltd, 45 Lisburn Rd, Ballynahinch, Co. Down, BT24 8TT.  
T: +44 (0)28 9756 4636 - E: info@ajplumbing.co.uk  
[www.ajplumbing.co.uk](http://www.ajplumbing.co.uk)

**AJ PLUMBING  
SUPPLIES LTD.**  
EST. 1979





Rory Best – Flogas Brand Ambassador

# Switch today and get a free LPG boiler.\*

Keep your eye on the ball and join thousands of people, including **Rory Best**, who made the smart move from oil to LPG.

Flogas supplies efficient heat, hot water, controllable gas cooking and more. So your home will stay nice and warm.

**Get yourself off to a winning start and get a free LPG boiler when you switch to Flogas.\***

**NI – T: 028 9073 2611 | W: [flogasni.com/homeheat](http://flogasni.com/homeheat)**

**ROI – T: 041 214 9600 | W: [flogas.ie/homeheat](http://flogas.ie/homeheat)**

\*Terms & Conditions Apply. See [www.flogasni.com/t&c](http://www.flogasni.com/t&c)



**Wherever you are**







New Flogas Home Heat brand ambassador Brian Dooher pictured with Martin Loughran, Flogas Area Sales Executive.

SPECIAL DEALS FOR NEW DOMESTIC CUSTOMERS AND INSTALLERS...

## Flogas offers two-year fixed price deal for home heat customers

Get the word out to your domestic clients – Flogas is offering a free Ideal Logic 30kW Boiler and a two-year fixed price deal to new Flogas single tank bulk LPG home heat customers.

If you have any residential household customers who are looking to switch from oil to LPG in their existing home or are about to build a new one, suggest they talk to Flogas first. If your customer opts to go with Flogas you'll benefit from a £200 bonus in return!

The Flogas Home Heat offer is open to single tank, bulk LPG home heat customers living in privately owned and permanently occupied domestic homes. They will also need to sign a two-year domestic bulk LPG supply agreement. Wherever your customers live, there are many benefits to switching from oil to Flogas LPG to get the heating just right. The free Ideal Logic 30kW boiler that comes with the Flogas Home Heat installation has a 10-year warranty, and is packed with features guaranteed to please your customers. It complies with Class 6 NOx specifications and carries an A Class energy rating. LPG conversion compatibility is a given and it is also Wi-Fi and RF-control compatible. With a compact cupboard fit, easy-to-see pressure gauge and a fully back-lit LCD display with frost protection, it is designed for today's household needs.

**NEW BRAND AMBASSADOR**  
Rugby legend Rory Best is now joined by the newest Flogas Brand Ambassador, Brian Dooher. Brian is a former Gaelic footballer, having played for Tyrone between 1995 and 2011, and was appointed co-manager of the Tyrone senior football team in 2020. The athlete couldn't be more satisfied with the change. "Switching from oil to Flogas LPG was easy and the family love it. We now have a cosy home, hot water on demand and controllable gas cooking." The company is happy to support installers with marketing material for any household interested in installing Flogas for home heating.



Further information, including full boiler spec plus offer terms and conditions, can be found at [flogasni.com/installer](http://flogasni.com/installer) or [flogas.ie/installer](http://flogas.ie/installer). Alternatively, installers can get in touch by calling T: +44 (0)28 9073 2611 (NI) or E: +353 (0)41 214 9600 (RoI)



Rugby legend Rory Best continues to carry the mantle as Flogas Home Heat brand ambassador.



## MEET THE NEW WARMFLOW NERO CYLINDERS

Homeowners will enjoy endless hot water for all their needs with Warmflow’s new Nero hot water cylinders, a water heating masterpiece. They are supplied with all the necessary parts for a quick, easy and professional installation.

Boasting excellent heat-up times and efficiency, the new Nero cylinders are available in indirect, twin coil, triple coil, direct and heat pump models. They come in volumes from 110 to 290 litres, with duplex steel construction and grey leather grain casing with high-performance rigid coils.

The new cylinders are designed to work perfectly in tandem with the Warmflow Zeno range of air source heat pumps and have changed in colour to better match the look of the heat pump. The new Nero range is now available at your local plumbing merchants.

For more information, contact your local Warmflow sales manager, call +44 (0)28 9262 1515 or visit [www.warmflow.co.uk/cylinders](http://www.warmflow.co.uk/cylinders)

## E&R BENNETT OPENS NEW BATHROOM SHOWROOM

Bathroom and plumbing suppliers E&R Bennett inaugurated their new bathroom showroom in Fivemiletown at the beginning of February. After a year of hard work with construction company Rahoran, the now revamped space features the latest trends from exclusive brands, including Utopia Bathrooms, MyLife Bathrooms, Imperial Bathrooms and Adamsez Baths. Now E&R Bennett also offers high-end brands Villeroy & Boch and Keuco.

The new extension features an outdoor showroom, an interior design room with 3D CAD software Virtual Worlds and an Architectural Studio. The brand-new Renewables Centre offers a training room for installers to learn more about heat pumps provided by Firebird, Daikin and Floortherm.

“The feedback so far has been really positive,” commented Managing Director Rodney Bennett.

“We had over 450 people on the opening night and architects, installers and the public have come from all over the country, North and South, to see the new showrooms.”

[www.eandrbennett.co.uk](http://www.eandrbennett.co.uk)



(L-R) Plumbmaster Director Eamonn McCarthy and Sales Manager Paul McDowell.

## PLUMBMASTER INVESTS OVER £140K TO SUPPORT GROWTH

Leading plumbing and heating merchant, Plumbmaster has invested over £140k into the operational side of the business as they welcome four new delivery vehicles to their already well-established fleet.

The acquisition of these vehicles was necessary to support the additional business they have secured.

The new additions to the fleet will enable Plumbmaster to continue to service its ever-growing customer base, which coupled with its extensive product range and award-winning customer service, the plumbing and heating merchant will continue to satisfy its customer needs.

Plumbmaster has sustained its trajectory of success in recent years, which this successful company owes to its loyal customers and colleagues. The company will utilise these new assets to best serve its customers requirements.

[www.plumb-master.com](http://www.plumb-master.com)



# SONAS

BATHROOMS REIMAGINED

## SAFE SEAL

WATERPROOF AND FLEXIBLE SEAL BAND



- Double Seal
- 120mm Tileable Seal
- Easy to Install
- Prevents Leaks
- Flexible & Versatile
- Available in 2, 3, 4 & 5m Rolls

Ask for  
**SAFE SEAL**  
at your local  
**SONAS**  
Stockist



SCAN TO WATCH  
INSTALLATION VIDEO

DISTRIBUTOR - SONAS

SONAS IS DELIGHTED TO SHARE TOP FOUR TIPS TO ENSURE HOMEOWNERS HAVE THE BATHROOM OF THEIR DREAMS...

# Bathrooms reimagined for 2023

Bathroom refurbishments are always at the top of homeowners' lists for the new year. SONAS Bathrooms, Ireland's largest bathroom brand, offers inspiration with one of the widest ranges of modern bathroom products available on the island. SONAS is delighted to share top four tips to ensure homeowners can have the bathroom of their dreams in 2023.



Wall-hung 60mm SONAS Finland countertop in ocean blue, Skål round countertop basin in ocean blue and Alita wall-mounted basin mixer in brushed gold.

## natural vibes

While some are colour fans, others are drawn to the rustic natural look, thanks to the rise of biophilic or luxitarian design. Homeowners can bring this look to life with natural colours like sandy grey in the Smart range, or craft oak, available in the versatile Otto Plus. Solid Surface basins, manufactured from a silky-smooth natural resin material, also add a touch of sophistication to the bathroom. Due to popular demand, the stylish dual-tone Skål countertop basins are now available in morning sky blue and cashmere pink to coordinate with the Finland countertop units. Bathroom aesthetics complement this modern look, with different choices of tiles, wall panelling and décor. Plants are a great touch and thrive beautifully in bathrooms.



Floor-standing 60mm SONAS Kora vanity in sun kissed yellow matt.



Wall-hung unit 60mm SONAS Finland vanity in morning sky blue matt.

## customised vanity units

Gone are the days of identical bathrooms. Today is all about customising the space to the homeowner's needs, style and lifestyle. The advice here is for homeowners to design to their own taste, not what is just on-trend. With a total of twenty stylish furniture ranges from SONAS, a palette of twenty-nine colours, and five different handle finishes with a variety of sizes, there is plenty of choice. As the central furniture piece in the bathroom,

the vanity unit sets the tone for the space. New to the 2023 SONAS Scandinavian furniture range is the Kora. Designed with rounded edges and contrasting handles, Kora is available in a bright new colour, sun kissed yellow. With calm blue seen as a real colour for wellness, the Finland unit in morning sky blue is a great option. For those who would like to bring some feminine energy, the cashmere pink options are stunning.



"SONAS offers inspiration, with one of the widest ranges of modern bathroom products available on the island."



## everyday luxury

Recreating the spa-like feeling at home can offer a luxurious experience every day. As people spend so much time at home and in their bathrooms, it is a space worth investing in. It is important that this enhances daily routines and adds to a feeling of well-being.

Spa-like bathrooms are characterised by freestanding baths, whirlpools and double vanity units. For more budget-friendly ways to upgrade a bathroom without a complete renovation, homeowners should consider upgrading taps or shower heads. Additional storage can be added with a new illuminated SONAS mirrored cabinet. The bestselling illuminated Sansa sound bluetooth mirror can bring both music and lighting to help elevate the space. The finishing touches are also important, and high quality accessories can make all the difference.

It is all about creating a calm space where people can prepare for, or unwind from, the day. While a full bathroom renovation may not be required, a few clever upgrades can make an impressive transformation.



## super-size showers

With Pinterest trends showing an increase of almost 400% in searches for walk-in showers, SONAS has also noticed that more homeowners are opting for larger shower trays. Aspect wet room panels from SONAS are key to creating a boutique hotel look with style. The various finishes include nickel and white, and those with spacious bathrooms can opt for a tray up to 2 meters in length. For an enclosed showering experience, the Aspect range of sliding doors is ideal. SONAS recommends homeowners visit a local bathroom retailer to test out the preferred shower size. Standing in the shower will help them decide on the size and style of the tray, door or wet room panel configuration.

Central to the showering experience is the choice of shower valve, which controls the pressure and temperature of the water. The stylish new Alita shower valves with knurled handles offer precision in controlling the water flow. When opting for a concealed valve, the user may prefer to have the controls positioned where they step into the shower.

SONAS offers a large variety of shower heads, with options such as rain heads, handsets, and rail kits to suit all needs.

For more information about SONAS Bathrooms, speak to your local Sales Representative or  
T: +353 (0)1 817 9755 - E: [info@sonasbathrooms.com](mailto:info@sonasbathrooms.com)  
[www.sonasbathrooms.com](http://www.sonasbathrooms.com)

**SONAS**  
BATHROOMS REIMAGINED





MYLIFE®



## Ryver

A new collection of taps and showers in four remarkable finishes with optional knurled accents to embrace the charm of industrial chic.





DISTRIBUTOR - MYLIFE



Bonita 600 sage green furniture.

AWARD-WINNING BATHROOM DISTRIBUTOR, MYLIFE, LAUNCHES NEW 2023 COLLECTION WITH STYLE...

## Bringing bathrooms back to life

Life is simply too short for boring bathrooms. That's why MyLife, one of the UK & Ireland's fastest-growing bathroom brands, has expanded their product range to over 1000 items to help consumers achieve their dream bathroom. Everything the modern bathroom requires, MyLife has it. The stylish portfolio covers all bathroom categories: ceramics, bathing, furniture, showering, mirrors, heated towel rails and taps & accessories. With everything available under one brand, it's never been so easy to help consumers visualise their ideal bathroom space.

The true hero of MyLife's new collection is the industrial-chic Ryver brassware and shower collection, which features optional knurled accents for the ultimate upgrade. The stylish collection is available in four finishes: chrome, brushed brass, matt black, and gun metal, across standard and wall-mounted basin taps, floor-standing and wall-mounted bath fillers, plus a thermostatic

exposed drench shower for the essential spa experience.

Fans of MyLife's popular furniture range Ezra can also upgrade their showroom displays with new knurled handles in four core colour options to complement the new Ryver brassware range.

Located in Newry with branches in Hailsham, England and Wishaw, Scotland, MyLife's 28 fleet of vans, lorries and drivers, plus consistently high stock levels, means they can offer next-day deliveries to over 500 retailers across the UK & Ireland.



MYLIFE®

To explore the new collection or become a MyLife Retailer, visit their website today.

T: +44 (0)28 3025 6392

E: sales@mylifebathrooms.com

www.mylifebathrooms.com

## Focus on innovation

MyLife Bathrooms was acclaimed Supplier of the Year at the last Northern Ireland Plumbing & Heating Awards. According to the judges, the company is nothing short of remarkable, with a very focused business plan which has not only met but also exceeded revenue goals.

The supplier's ability to penetrate both UK and ROI markets was also highlighted by the panel, and it reflects their focus on excellent customer service, high-quality products, and consistently high stock levels – which are often around an amazing 99%. The panel also recognised that MyLife Bathrooms is more than just a supplier, as its in-house design team brings the latest trend designs to their portfolio, backed by market research and customer feedback. Thanks to this focus on innovation, their product offer is refreshed every six months and supported with full product launches every January and July.

According to clients' testimonials, the company's services are second to none, and "MyLife Bathrooms really have evolved very quickly into a market leader and trendsetter in the industry."



Supplier of the Year, MyLife Bathrooms.

LARGA  
COMING SOON

NIKO  
BATHROOMS  
*Get Inspired!*



brought to you by...

It is all about personalisation. The new LARGA modular furniture range offers unlimited combinations of cabinets, basins, handles and colours for bathrooms of all sizes...

NIKO  
BATHROOMS  
*Get Inspired!*

t: +353 (0)1 400 0000  
e: sales@nikobathrooms.ie

Unit 5 Broomhill Business Complex,  
Broomhill Road, Tallaght,  
Dublin 24, D24 X270

nikobathrooms.ie [f](#) [t](#) [@](#) [in](#)



## DISTRIBUTOR - NIKO BATHROOMS



New LARGA range - coming soon to Niko Bathrooms.

THE NEW LARGA MODULAR FURNITURE RANGE FROM NIKO BATHROOMS OFFERS UNLIMITED COMBINATIONS OF CABINETS, BASINS, HANDLES AND COLOURS FOR BATHROOMS OF ALL SIZES...

## It is all about personalisation

It has been an exciting start to the year for the Niko Bathrooms team with the launch of LARGA, their new modular bathroom furniture range that will be available to view at their Dublin showroom and to retailers, merchants and bathroom showrooms nationwide in March. Aptly named, LARGA is the Spanish word for 'long', making it synonymous with the scope of this new range that offers homeowners the versatility to extend their design options to limitless combinations. LARGA has been inspired by the knowledge that customers want to be creative within their bathroom space, without the need to compromise on design styles, whether they have restricted space or in some cases, too much space and don't know how to optimise it. "This range will allow people to express their own personal choice; it's all about combination and personalisation," commented Cathy Orr, Group Marketing Manager at Niko Bathrooms. "Sometimes people like a furniture piece in the showroom, for example, but it is not available in the size they are looking for. This range provides more freedom of choice for bathrooms of any size."

**THE MODULAR JOURNEY**  
LARGA brings the customer through a journey of selection and choice, step by step. It starts with selecting the furniture piece and then making the ever-important colour choice from a refined palette reflecting the latest in design trends and popular tones: white, grey or powder blue. "It is possible even to mix and match cabinet and unit colours for a patchwork design," Cathy explained. "The powder blue is a revelation when combined with unexpected wall colours such as sage green, for example." The countertops are available in white, grey, blue, white marble and black marble, and in a variety of length options: 60, 80, 100 and 120cm. The next step is deciding on the washbasin style, with the option to choose an inset or countertop model (available in various colours, shapes and finishes). Then, the customer can complement their furniture by choosing cabinets and brassware, including finishings in black, chrome and brass.

### THOUGHTFUL DETAILS

Small details and furniture finishes will give the room an expressive, dynamic feel and make it far from dull. Well-chosen furniture handles and feet from the collection complete the perfect look.

### PEACE OF MIND

The elegantly designed LARGA basins feature ultra-thin 5-6mm edges, but their durability is enhanced by ROCKLITE ceramic, which is strong yet ductile and has unrivalled impact resistance. The furniture tops are manufactured with AQUASAFE technology. Thanks to an additional anti-fungal impregnation and a modified density of the board, these elements are more resistant to water absorption and humidity in the bathroom.

**NIKO** **LARGA**  
BATHROOMS  
*Get Inspired!*

Unit 5, Broomhill Business Complex, Broomhill Road, Tallaght, Dublin 24, D24 X270  
T: +353 (0)1 400 0000  
E: sales@nikobathrooms.ie  
www.nikobathrooms.ie

MANUFACTURER - **AQUALLA**

AS SUPPLIERS OF WATER-DELIVERING PRODUCTS, AQUALLA IS RESPONSIBLE FOR CONTINUALLY ASSESSING AND IMPROVING ITS PRODUCTS TO BE AS SUSTAINABLE AS POSSIBLE WITHOUT COMPROMISING THE HOMEOWNER'S EXPERIENCE...

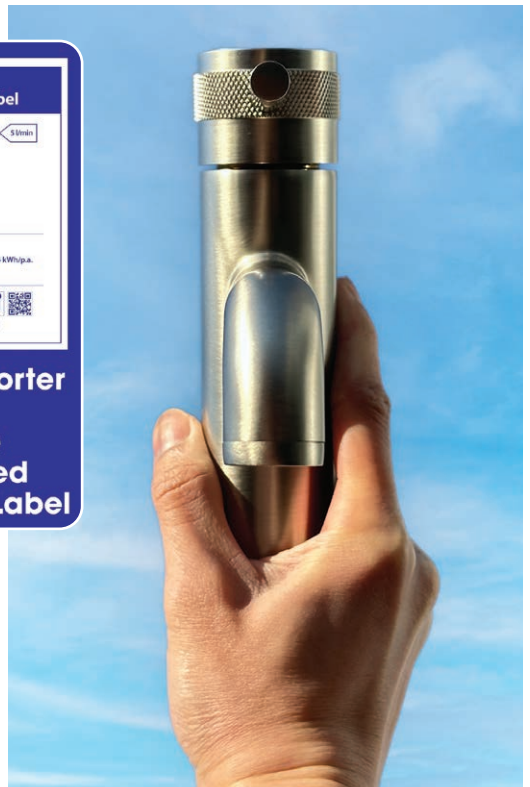
# The more sustainable choice

Aqualla products are registered with The Unified Water Label Association (UWLA) as an industry standard for the simple identification of the water and energy use of products. The Unified Water Label shows how much water and energy are used by products, allowing consumers to make more informed choices. Choosing Aqualla Unified Water Label products will help to use water wisely, as they are registered on the UWLA website.

Aqualla offers a solution for water efficiency, with new retrofit water-saving aerators to help reduce water consumption on showers and taps which are not already using these devices. The company's commitment allows them to adopt more sustainable processes, from manufacturing and packaging to paper-free offices and swapping to recycled stationery throughout the business.

In Aqualla Adamsez's latest carbon balance project with the World Land Trust, the companies show how to balance carbon dioxide production and help protect critically threatened forests. They promote QR codes for digital brochure downloads and encourage customers to use them.

As well as products and processes, they focus on sustainable people with regular health and well-being initiatives and trained, in-house mental health ambassadors, helping to encourage a healthy body and mind. Join Aqualla as they work towards a more sustainable way of doing business and promoting water efficiencies.



Steven Allaway Managing Director, Aqualla & Adamsez.

## Sustainability as a core value

As a growing business, we are responsible for playing our part and taking sustainability seriously, especially as a supplier of water-delivering products. With Government predictions of major water shortages in the not-too-distant future, we have a significant role to play in helping our customers, consumers, and society manage this through products that don't compromise on functionality but use less water. We have now adopted sustainability as a core value for Aqualla

and Adamsez. Our objective for 2023 is to focus on a sustainable journey. We will continue to develop initiatives already in place and identify new ones through our products, processes and people. We hope that you will join us.

“We have now adopted sustainability as a core value for Aqualla and Adamsez.”



T: +44 (0)28 9182 8000  
www.aquallabrassware.com  
**www.adamsez.com**





AQUALLA®

The more sustainable choice



*Scan the Code*

TO DOWNLOAD OUR  
LATEST BROCHURE

All Aqualla basin taps  
and showers in our  
Design Collection achieve  
**Green Band Unified Water  
Labelling Certification.**

Products that don't  
compromise on functionality  
but use less water.

Telephone: +44 (0)28 9182 8000  
[aquallabronware.com](http://aquallabronware.com)





SUPPLIER - GREENLINE PLUMBING SUPPLIES



L-R: Liam Sheridan, Padraig Sheridan and Donal Harten.

GREENLINE PLUMBING SUPPLIES NOW OFFERS A TOTALLY REFURBISHED BATHROOM SHOWROOM AT THEIR CAVAN BRANCH WITH PRODUCTS IN THE LATEST COLOURS AND STYLES...

## A great mix of traditional and modern ware

The bathroom showroom at Greenline Plumbing Supplies' Cavan Branch has gone through a complete makeover to offer the latest trends and colours in sanitary ware, units, taps and mixers, showers and shower doors, tiles and designer radiators. "The refurb lasted eight weeks and involved a lot of late nights and early mornings to keep both the shop and showroom operational while the work was being done," commented Branch Manager Liam Sheridan. "We needed to adapt the showroom to suit all tastes and now we have a good mix of traditional and modern ware."

### CAREFUL SELECTION

The old showroom was stripped back to bare walls and floors to display tiles in the latest patterns and colours. The new space now features products from celebrated brands such as Sonas Bathrooms, RT Large, MyLife, Triton Showers, Mira Showers, Aqualla Brassware, Flair, Merlyn and Vaporo.

The showroom displays new trends such as slate trays with coloured shower doors in black and brass, funky taps and mixers in brass, chrome and black, and a great selection of mirrors which, according to Liam, is a big part of the branch's business. "We also have a range of bar mixer





showers connected to a water supply so that the customers can see the shower in operation,” Liam added. The Cavan showroom offers several options for electric radiators, such as the ones from the Farho range, which can be fitted anywhere in any room.

#### THE FULL PACKAGE

Greenline Plumbing Supplies caters for both trade and retail customers, and the feedback on the new showroom display has been more than positive. “They all have been very impressed with the way we have the space laid out,” Liam commented. “We also have all products priced for easy viewing, which is a massive help to customers when buying a bathroom suite.”

The sales team at the Cavan branch offers the full package, including the design of the client’s dream bathroom. “Our team can call at the homeowner’s house, offer some ideas for their new bathroom and then provide a competitive quote to supply the ware,” Liam explained. The branch has just acquired a new van

for its fleet and now can count on three vehicles to provide free same-day or next-day delivery on all bathroom suites. “We are open for everyone, whether they are seasoned plumbers looking for a boiler or someone who needs a tap or a shower. Our sales team will look after you with the best price and service around,” Liam added.

#### A NEW OPPORTUNITY

Headquartered in the Mullaghboy Industrial Estate in Navan, Greenline Plumbing Supplies was founded in 2017 and opened its Cavan branch in 2019, taking over the Cavan Plumbing Centre premises. “We had been thinking about expanding in Navan and were looking for premises big enough to include a bathroom showroom. But this opportunity arrived on our doorstep, and we couldn’t ignore it,” explained David Bates, Managing Director at Greenline Plumbing Supplies. Former Cavan Plumbing Centre employee, Liam Sheridan, was made branch manager. “Liam has over 20 years of experience in selling plumbing

supplies and is well-known in the local plumbing community. He’s a great asset to the store,” David added.

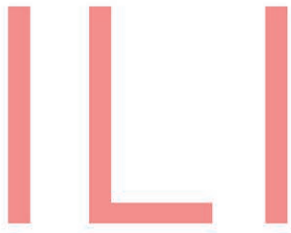
#### UNRIVALLED PRICE AND SERVICE

The company is proud to provide competitive prices and great customer service. Greenline Plumbing Supplies caters for all projects and provides a varied range of products from leading manufacturers including not only sanitary ware and other bathroom products, but also gas and oil boilers, heat pumps and solar panels.



Greenline Plumbing Supplies, Unit 2, Corlurgan Business Park, Ballinagh Road, Cavan  
 T: +353 (0)49 436 0055 - E: info@greenlineps.com  
[www.greenlineps.com](http://www.greenlineps.com)





## CREATE YOUR PERFECT BATHROOM SANCTUARY WITH FLAIR SHOWERS



At Flair, our vision is to inspire you with meaningful designs that bring a new sense of enrichment to your bathroom.

Please visit our website [www.flairshowers.com](http://www.flairshowers.com) to view our extensive product portfolio - we know you will be captivated by every detail.

flair  
—

Rocks Road  
Kingscourt  
Co. Cavan  
Ireland

T +353 42 966 8000  
E [sales@flairshowers.com](mailto:sales@flairshowers.com)

ORO ETO ILI AYO

Connect with us



FLAIRSHOWERS.COM



## MANUFACTURER - FLAIR

FLAIR SHOWERS REVEALS NOTEWORTHY TRENDS IN BATHROOM DESIGN FOR 2023...

# Style and functionality

The bathroom is one of the most hardworking rooms in our homes and, while following the latest trends, it should not only be stylish but also as functional as possible. Flair Showers reveals some noteworthy trends for homeowners to get the most out of their bathroom design in 2023.

Flair is passionate about design that delivers what people really need - their products are carefully crafted to be aesthetically beautiful and function perfectly so that they will stand the test of time for homeowners.

## AFFORDABLE DESIGN AND QUALITY

Flair Shower's newly launched ILI collection blends style with affordable quality. Each door option features carefully considered design details, such as ergonomically crafted handles with a cleverly integrated hook. The minimalist profiles and neatly curved hinges give simple, clean lines to the aesthetic. Each sliding door features a silent wheel track system while Clearvue glass coating ensures the 6mm shower door glass remains sparkling clean. For complete flexibility, ILI is available in non-standard door widths and reduced height options, offering a solution for every bathroom renovation.



ILI hinge door (door sizes available 760mm up to 1000mm). Standard height 1950mm. BABY ILI at a special height of 1800mm is also available. Please contact Flair Showers for further details.

flair

T: +353 (0)42 966 8000  
E: sales@flairshowers.com  
www.flairshowers.com

## THE 'SPATHROOM'

The desire for a personal sanctuary has led to a new-found appreciation of sensual bathroom designs, with stylish shower zones. Luxurious bath choices, beautiful brassware and interestingly shaped vanities are all on homeowners' wish lists.



AYO brushed brass wet room with hinged rotating return panel.



ETO infold shower door, which protrudes minimally into the bathroom zone whilst also allowing generous access to the shower.

## CREATIVE SOLUTIONS FOR SMALL SPACES

Increasingly limited living space demands greater practicality in the bathroom and smart solutions. These include bijou vanity units, wall-hung toilet pans that give the illusion of space and smaller shower doors that still pack a punch with their stylish design.

## NO MORE BORDERS

The borders between the bedroom and bathroom are dissolving to offer an integrated living space. As a result, functional fittings such as taps, ceramics, and showers are expected to look beautiful. Trends also include more striking shower door surface finishes, brushed nickel, brushed brass, matt black and white.



Matte black ORO hinge and inline door with ultra-frameless corner side panel.

## THE JAPANDI LOOK

'Japandi' is a hybrid of Japanese and Scandi design principles. Crisp clean lines are combined with calming colour palettes and natural materials to offer the ultimate restful bathroom experience. The design is based on simplicity and functionality.



AYO wet room with floor-to-ceiling stabilising bar.



**Aria** Countertop



**Aria** Basin

**KE**

*Plumbing Supplies*

**New Ranges** Of Modern Bathroom Furniture



**Adare**



**Maple**

[www.keplumbing.co.uk](http://www.keplumbing.co.uk)



## SUPPLIER - KE PLUMBING SUPPLIES



KE PLUMBING OFFERS A COMPLETE BATHROOM DESIGN SERVICE, COMBINING QUALITY PRODUCTS, EXPERT ADVICE AND EXCEPTIONAL CUSTOMER CARE...

## Making a dream bathroom come true

Award-winning bathroom retailer KE Plumbing offers a showroom with a wide array of products from leading manufacturers in the industry, including brands such as Sonas, MyLife, Roper Rhodes, HIB, R2, Nuie, Kristen and Calypso Bathrooms, among others.

KE Plumbing also features its own imported bathroom line, Atti, which guarantees not only high-quality products but also competitive prices. Thanks to its complete range of solutions and outstanding customer service, the company was acclaimed Bathroom Retailer of the Year at the Northern Ireland Plumbing & Heating Awards 2022.

"We update the showroom as often as possible to get the latest trends on display," explained Marketing Manager Michael Shannon. While curating the pieces for the area, Christopher Hughes and Jamie O'Neill from the Showroom Team rely on their experience and vast expertise, plus recommendations from the brands. "There is also always a

wildcard, like a yellow unit or a piece that is less conventional when they are trying something new," Michael said.

### GROOVY GROOVES

For 2023, the KE Plumbing showroom bets on colourful vanities adorned with details like grooves and etches, complemented by taps in black or brushed brass or gold. Golden details are also featured in wet room panel trims. Bold colours are a trend for basins and bathtubs, including a pink model that has raised eyebrows. "Clients going for the monochromatic look now can go full circle with a black toilet from the Atti's Black Series 300, which can also be a bit controversial," Michael commented.

### EXPERT ADVICE AND CUSTOMER CARE

The design team at KE Plumbing uses 3D bathroom software to offer customers a clear plan and visualisation of their bathroom - and all free of charge. "The clients provide their plans or measurements, and then Chris uses

Virtual Worlds to show exactly what the bathroom could look like," Michael explained.

The team can provide the client with a strikingly accurate impression of the finished design, right down to the smallest detail. Michael continued, "We work with the customer at every stage of the process to ensure we have fully understood their aspirations and can deliver them within their budget." At the Northern Ireland Plumbing & Heating Awards 2022, the judging panel highlighted the great pride the staff takes in their work and exceptional customer service. "Our team goes above and beyond for our customers. I've seen customers come here and say 'I'll leave it all in your hands'. This is how much they trust our work," Michael concluded.



T: +44 (0)28 8675 2388

E: [contact@keplumbing.co.uk](mailto:contact@keplumbing.co.uk)

[www.keplumbing.co.uk](http://www.keplumbing.co.uk)



# Instantor<sup>®</sup>

## Pex-Al-Pex Pipe



## New Instantor<sup>®</sup> Pex-Al-Pex Range is Designed with Euro Class Fire Rating BL-S1-D0

### Benefits of using Instantor<sup>®</sup> IPAP6 Range

- ✓ Reduced Thermal Transfer
- ✓ Reduced Heat Loss or Heat Gain
- ✓ Reduced unwanted noise pollution
- ✓ Reduced surface condensation (dew/sweating)
- ✓ Maximum heat losses from the Pipework comply with Part L regulations
- ✓ Product is flame-retardant and does not produce flaming droplets
- ✓ Improves energy efficiency
- ✓ Reduced operating costs
- ✓ Reduced risk to personnel from contact with high surface temperatures



[www.instantor.ie](http://www.instantor.ie)



+353 (0)1 842 6255

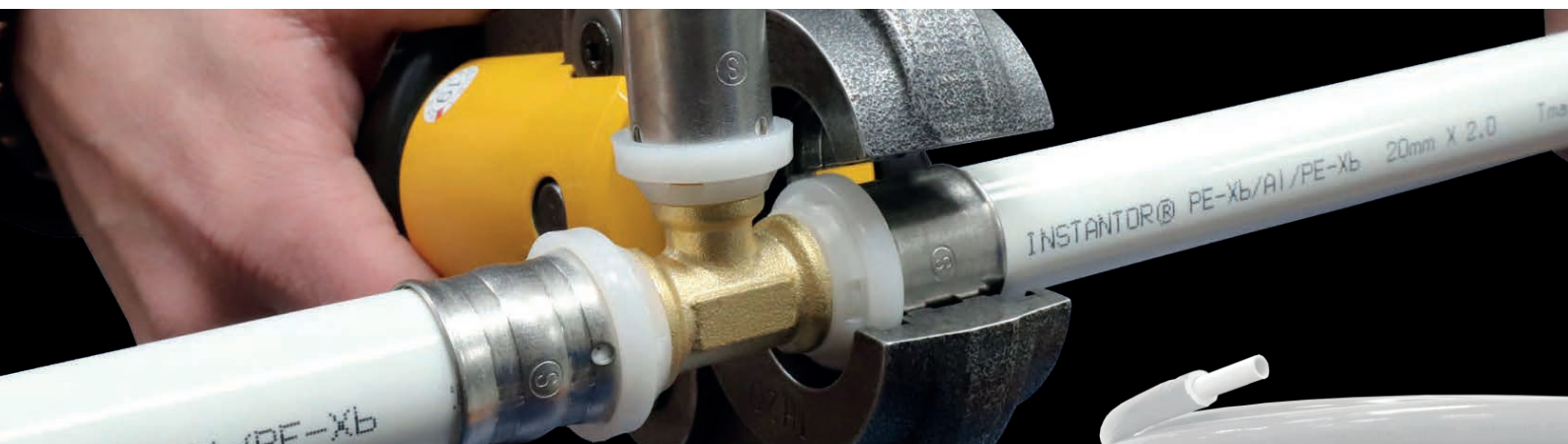


[info@instantor.ie](mailto:info@instantor.ie)



Instantor Works,  
Santry Avenue, Santry,  
Dublin D09 K160





INSTANTOR'S NEW PEX-AL-PEX PIPE RANGE IS DESIGNED WITH EURO CLASS FIRE RATING BL-S1-D0.....

## Instantor launches BL-rated pipe range

Instantor has recently launched a new range of BL-rated pipe that will join the Instantor Pex-Al-Pex range. As per fire classifications, products conforming to Euro Class Rating BL-S1-D0 are designed to be flame-retardant and do not produce flaming droplets/particles.

IPAP6 will join the existing range of Insulated Pex-Al-Pex pipe carried by Instantor and will be designed with Euro Class Fire Rating BL-S1-D0. Insulating pipework can limit or slow the thermal transfer across the pipe's wall. This may either be via heat loss or heat gain to the contents contained within the pipework. Insulation of pipework also helps to prevent the build-up of condensation (dew point/sweating) on the outside of the pipework wall. This is known to reduce thermal efficiency and create a corrosive and aggressive environment for metallic components. This can be amplified with the release of Chloride, Fluoride and other ions from the insulation material, which can affect the localised PH. Insulating the pipework provides a light-duty sheath to protect the pipes while allowing space for thermal expansion

“... designed to be flame-retardant and do not produce flaming droplets/particles.”

within the installation and reducing noise pollution. Additionally, it can protect personnel from contact with high surface temperatures.

### INSTANTOR PRESS SYSTEM

The Instantor Press System, certified by the NSAI to IS EN ISO21003 is a complete system consisting of Pex-Al-

Pex multilayer composite pipe (MLCP) and brass radial press/crimp fittings. This product is offered as a system solution, rather than the traditional methods of supplying pipe and fittings separately. Instantor Press System is designed for a minimum 50-year lifecycle, per the Building Regulations. The system holds both KIWA and WRAS approvals for potable water applications.

Instantor M-Type pipe offers a metallic layer of aluminium that creates a 100% oxygen barrier. The Instantor Press Pipe is supplied in different offerings, from plain pipe coils or lengths to insulated pipe coils in varying degrees of specification to achieve compliance with the Technical Guidance Documents - Part L for heat loss/gain, Part B for fire safety, Part D for proper materials and the NSAI Standard

Insulated IPAP from Instantor, designed with Euro Class Fire Rating BL-S1-D0.

Recommendations SR50-1 & SR50-3:2021.

Instantor insulated pipe coils are enclosed in a scratch-resistant, closed-cell polyethylene foam sheath which has been designed to comply with the Building Regulations and applicable testing standards. Instantor pipe insulation has a PH of 7.5, keeping it in a neutralist window along with Non-Detection (ND) of any trace ions.

Instantor's in-house Technical Experts are on hand to assist with any product selection, project-specific advice, or technical queries. Instantor Insulated Pipe Coils Euro Class BL-S1-d0 to EN13501 are available to purchase from merchants nationwide.



**Instantor®**

For more information, get in touch at +353 (0)1 842 6255 or email [sales@instantor.ie](mailto:sales@instantor.ie) [www.instantor.ie](http://www.instantor.ie)



Billing Address:  
Mark Comerford  
Southpark  
Hill View  
4501000

# We've put our prices on ice.

Your customers enjoy a 2-year price freeze when they switch to Calor for home energy.

- Cleaner than oil
- Ideal for heating, cooking and hot water
- Automatic top-up so they never run out
- EasiPay options to help spread the cost

See [calorgas.ie](http://calorgas.ie)

T&Cs apply.







CALOR CUSTOMERS WHO WISH TO UPGRADE THEIR BOILER ARE ELIGIBLE FOR A BONUS OF €300/£250 GAS CREDIT...

## Calor rewards existing customers with a boiler replacement offer

Registered gas installers can now offer existing Calor customers up to €300 or £250 off their bill when they choose to upgrade an older, inefficient gas boiler. Customers may not be aware that any boiler that is over 10 years old is not efficient by modern standards and may be wasting energy

and costing excess money. Replacing a functioning gas boiler may seem like a costly and unnecessary task, but replacing an underperforming boiler before it finally breaks down fully will save money and avoid inconvenience in the long run. Heating is only as efficient as the boiler. That is why Calor has a special boiler

replacement upgrade offer for their existing customers, to help them make the change. Calor customers who use a registered gas installer to carry out an upgrade and complete the claims form for them when the new boiler has been installed will get a bonus of €300/£250 gas credit on their Calor account. Cosy central heating and instant hot water are just two of the many benefits that Calor brings to a home. Calor's customers are also eligible for the current two-year price freeze offer\* so they can have the added security of knowing that their fuel price won't be subject to any increases over that period.



 **CALOR**

For further information on the Calor boiler replacement offer or Calor price freeze offer, visit [www.calorgas.ie](http://www.calorgas.ie)

\* Terms and conditions apply. See [calorgas.ie](http://calorgas.ie)



NORTHERN IRELAND POLITICIANS ARE BACKING A BILL AIMED AT REDUCING THE DUTY CHARGED ON RENEWABLE LIQUID HEATING, WHICH COULD PAVE THE WAY FOR RAPID ADOPTION OF HVO ACROSS THE COUNTRY...

## OFTEC welcomes MPs' support of HVO for home heating



David Blevings, OFTEC Ireland Manager.

A Bill aimed at reducing the duty charged on renewable liquid heating fuel has won the support of two Northern Ireland MPs. DUP's Jim Shannon and Sammy Wilson have both confirmed their support for the Bill, which was tabled in Westminster by George Eustice, MP for Camborne and Redruth in England. If successful, the Conservative MP's Bill would pave the way for hydrotreated vegetable oil (HVO) to be adopted as a heating source across Northern Ireland's 500,000 liquid-fuelled homes. This method of heating homes across Northern Ireland is supported by OFTEC, the trade association for liquid fuel appliance manufacturers and installers.

Mr Shannon put his name to the Bill and said he was actively supporting it while Mr Wilson said the points raised by Mr Eustice in the debate deserve support. During the debate, Mr Eustice said: "The Government have long recognised the value of renewable fuels in the transport sector. We have the renewable transport fuel obligation (RTFO), which requires fuel manufacturers and importers to purchase a proportion of fuel from renewable sources.

"The Bill would extend the RTFO mechanism to cover the use of renewable fuels in domestic heating and remove the current duties from these renewable fuels, which are entirely counterproductive.

"The intended impact of my Bill is to reduce the cost of HVO so that it can achieve parity with kerosene. If we get parity of cost with kerosene—the cost of conversion is modest—we will see a very rapid adoption of HVO."

Later this year, The Department for Economy will carry out a consultation on decarbonising the heating sector before presenting a plan on how they propose to action this. The plan will outline how Northern Ireland will



"It was very encouraging to see two local MPs come out and publicly declare their support for this Bill."





A consumer in Co. Down has already started using HVO to heat his home. There will be a full report in the next issue.

achieve an overall 56% reduction in energy-related emissions by 2030. Both the Republic of Ireland and England have favoured a 'heat pump first' approach to decarbonising the sector. However, OFTEC strongly believes that a one-size-fits-all approach to decarbonising the housing sector in Northern Ireland must be avoided. OFTEC Ireland Manager, David Blevings said, "We believe the key to decarbonisation will see a range of technologies deployed, including biofuels.

"It was very encouraging to see two local MPs come out and publicly declare their support for this Bill and OFTEC hopes these are the first of many local representatives who see the benefits of HVO.

"Electrification and heat pumps may be the right solution for those in a new build or thermally efficient homes, but with 70% of bungalows, 50% of semis, 53% of detached houses and 44% of terraces in SAP Bands D - G, we believe these homes are not easily served (if at all) by a heat pump and an alternative technology is required.

"The intended impact of the Bill is to reduce the cost of HVO so that it can achieve parity with kerosene."

"The installation of a heat pump in a retrofit scenario can be a disruptive and costly process, and if the incentives being offered by our neighbouring Governments are anything to go by, we don't believe consumers will adopt this new technology readily and our chances of reaching our net zero targets will be severely hampered.

"In England, for example, the Government offers a £5000 grant towards an air-source heat pump. However, the total bill, including retrofit works is expected to be between £15,000 and £20,000.

"This leaves a substantial cost for the homeowner, especially during a cost-of-living crisis. In the Republic, a heat pump installation as part of a deep retrofit costs €56,000 on average and is beyond the reach of many families.

"In Northern Ireland, we have the benefit

of being in a position that allows us to review and reflect on the plans actioned in England and ROI.

"We believe biofuels have a key role to assist in decarbonisation and can sit alongside and complement other options". David Blevings added that the Bill, which now moves to a second reading, would allow homes to keep their boilers but "switch to a greener renewable liquid fuel which would significantly reduce carbon emissions with a much lower upfront cost."

He said, "Given the age and condition of many homes across Northern Ireland, we believe a switch to a biofuel would be a much easier and cost-effective option, plus it offers massive carbon savings (c.88%) now, not in 10 or 20 years' time. Any new strategy must be technology neutral and consumer-centric, fair and equitable in its delivery."

Meanwhile, OFTEC has extended an open invitation to MLAs and MPs to meet and tour the Belfast Oil Terminal to see how the liquid fuel industry works in Northern Ireland and discuss their plans for decarbonisation of the liquid-fuelled heating sector.

David Blevings, OFTEC Ireland Manager on T: +44 (0)28 9186 2916

Sean McBride, Ireland Representative on T: +44 (0)7540 502 304 (NI) or +353 (0)87 241 7041 (RoI)

[www.oftec.org](http://www.oftec.org)







**FUTURE  
PROOF  
YOUR  
BUSINESS!**



# OFTEC, your trusted partner in the decarbonisation of home heating.

OFTEC is a leading trade organisation for the oil and solid fuel heating industry across Ireland. Our aim is to promote the highest professional and technical standards while also supporting our most important assets: our technicians.

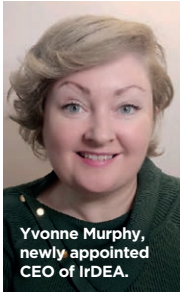
**Demonstrate your professionalism by registering with OFTEC for:**

**Liquid fuel • MCS • Renewables •**

**TrustMark Electrical (Part P) • Solid fuel • PAS 2030**

**Register now at [www.oftec.org](http://www.oftec.org)**





IRISH DISTRICT ENERGY ASSOCIATION (IRDEA) STATES DISTRICT ENERGY IS SET TO DELIVER SIGNIFICANT DECARBONISATION IN IRELAND'S HEAT SECTOR...

## Ireland has the building blocks to roll out large scale District Energy

Founded in 2017, the Irish District Energy Association (IrDEA) was established to promote and support the development of low-carbon District Energy in Ireland. IrDEA currently represents members from a variety of sectors across consultancy and technology providers, the public sector and academia. It is the only association in Ireland dedicated to supporting the District Energy industry.

This year, IrDEA turned a corner by appointing its first CEO, Yvonne Murphy, to lead the organisation. The appointment comes at a time of significantly increased ambition for the sector in Ireland. Renewed government targets for district heating, announced as part of the latest Climate Action Plan 2023, have tasked industry with delivering up to 0.8 TWh of district heating installed capacity by 2025 and up to 2.5 TWh by 2030. If achieved, this will be equivalent to connecting 80,000 homes by 2025 and 250,000 by 2030. Yvonne recognises that much work must be done, and quickly, to achieve these targets. But she errs on the side of optimism in saying, "The beauty of district energy is that the technology is proven, and the expertise exists to deliver it at scale now to kickstart the decarbonisation of Ireland's heat sector."

About 40% of total energy use in Ireland is accounted for by heat demand, with residential home heating making up 25% of energy-related CO<sub>2</sub> emissions. Having been slow to decarbonise, the heat sector is under pressure to ramp up decarbonisation. Yvonne contends that existing technology and scalable solutions can be rolled out quickly to speed this up. With the SEAI's 2022 Heat Study indicating that up to 54% of Irish buildings could benefit from district heating, district heating could be a particularly important part of that.

"This is where IrDEA comes in," Yvonne



said. Since its foundation, IrDEA has worked to address the gap in knowledge, capacity, standards and regulations on district energy. This has been done by building the organisation's membership and drawing on the considerable expertise within its ranks and among external experts. Engagement with key stakeholders has also been a key part of the organisation's strategy to promote and support the industry, which Yvonne highlights is the key to identifying and ensuring the adoption of practical solutions.

With the organisation primed to scale up its efforts to support and promote the development of the industry in the coming years, IrDEA and district energy are set to become a significant part of the Irish heating sector as it evolves and moves towards decarbonisation.

### Climate Action Plan 2023

- Industry tasked to deliver up to 0.8 TWh of district heating installed capacity by 2025 and 2.5 TWh by 2030.
- Equivalent to connecting 80,000 homes by 2025 and 250,000 by 2030.



E: [info@districtenergy.ie](mailto:info@districtenergy.ie)  
www.districtenergy.ie

# MAX FLOW

Direct-fired condensing gas water heater with  
peak flows of 1,018 - 3,620 (L/60' at 40°C)



**NEW**

## WaterMaster Evo

- 6 models available - 25-120kW
- High performance
- 2022 Part L compliant
- Space and cost saving
- 5-year warranty\*

**Proven reliability supported  
by 100 years of experience**



[acv.com/gb](https://acv.com/gb)

02890 365 555

\*Terms and conditions apply.



## SUPPLIER - C&amp;F QUADRANT

C&F QUADRANT DISTRIBUTE THE WATERMASTER® AND WATERMASTER® X EVO SERIES, WHICH ENSURE FASTER DELIVERY OF COMMERCIAL HOT WATER...

## Hot water guaranteed

C&F Quadrant Ltd, a major distributor and merchant of the heating and plumbing trade, is proud to supply the WaterMaster® range of condensing water heaters throughout Northern Ireland.

Both WaterMaster® and ACV WaterMaster® X Evo series are designed for the exclusive production of hot water for commercial applications. The water heaters combine ACV's 'Tank-in-Tank' concept with a double primary circuit to reach the high performance of a total condensation, double-circuit water heater.

The WaterMaster® X Evo models are equipped with a tank of bigger capacity. This series is especially designed to produce large volumes of hot water and meets high DHW demands at peak moments.

The DHW circuit recirculation connection also guarantees faster delivery of hot water to the whole facility. This series is particularly suitable for places where numerous DHW demands occur simultaneously, such as hotels, sports centres or hospitals.

All the WaterMaster® Evo models are equipped with a high-efficiency charging pump and an ACV air/gas premix burner with low nitrogen oxide (NOx) emissions. During operation, the burner starts automatically as soon as the water heater temperature gets lower than the preset temperature and stops as soon as the preset temperature is reached.

The WaterMaster® Evo series features a built-in frost protection mechanism: as soon as the flow temperature (detected by the negative temperature coefficient - NTC1 - probe) drops below 7°C, the primary pumps are activated. As soon as the flow temperature is at 5°C, the burner starts up until the flow temperature rises above 15°C. The pumps continue to run for around 10 minutes. The function can be enabled or disabled through the installer menu. When the frost protection is disabled, only the pumps operate.



To find out more about C&F Quadrant and ACV WaterMaster® X Evo models, call:  
T: +44 (0)28 9036 5555 or  
e-mail: michaelc@cfquadrant.com



“The WaterMaster® X Evo models are equipped with a tank of bigger capacity. This series is especially designed to produce large volumes of hot water and meets high DHW demands at peak moments.”

### Features and benefits

The direct gas-fired condensing water heater range includes models WaterMaster 45 Evo, WaterMaster 85 Evo and WaterMaster 120 Evo.

- Delivers large peak and continuous volumes of hot water
- Operates in the most efficient mode (fully condensing)
- Reduces Legionella risk due to temperature stored at > 60°C
- Small footprint allows installation in tight plant rooms
- Low maintenance with no anode protection required
- Compliant with the latest Ecodesign regulations for DHW
- Corrosion-resistant stainless steel heat exchanger and tank reduce maintenance and increase system lifespan
- Suitable for vented or unvented systems (optional Systempak 3 unvented kit required. Kit includes 25l expansion vessel, tundish, pressure control valve, combined pressure reducing set, and vessel mounting bracket.)
- Easy to use standardised controls using ACVMax control system
- Compatible for use with LPG and natural gas
- Supplied with factory-fitted T&P relief valve for ease of installation
- Improved access for service and maintenance 5-year warranty\*

### Tank-in-tank technology

- Fast heat up
- Rapid recovery
- Reduced footprint
- Reduced scale
- Low storage required
- Minimal heat loss

## ENSURING THE BEST ENERGY EFFICIENCY



**HWA1-A**  
Air-cooled liquid chiller  
for outdoor installation  
Capacity range:  
190kW - 345kW



**i-HPV5H**  
Air/Water inverter heat  
pumps with axial fan  
Capacity range:  
40kW - 70kW



**ALL MODELS AVAILABLE IN R290 SPRING 2023**

Hevac is the exclusive distributor in Ireland for trusted manufacturer MAXXA Air Conditioning. Contact us to find the right MAXXA high efficiency heat pump solution for commercial projects.

For enquiries, design information and quotations please contact:  
Muirfield Drive, Naas Road, Dublin 12 - Tel: 00 353 (1) 419 1919  
Unit L, Furry Park Industrial Estate, Santry, Dublin 9 - Tel: 00 353 (1) 842 7037  
South Ring West Business Park, Tramore Road, Cork - Tel: 00 353 (21) 432 1066

Paul Devereux, Specification Manager, Hevac  
paul.devereux@hevac.ie | www.hevac.ie

**48**  
1974-2022  
ANNIVERSARY

**h Hevac**



DISTRIBUTOR - HEVAC

IN PARTNERSHIP WITH MAXA, HEVAC OFFERS PRODUCTS AND SYSTEM SOLUTIONS THAT ARE ENERGY EFFICIENT, ENVIRONMENTALLY FRIENDLY AND CONTRIBUTE TO THE CIRCULAR ECONOMY...

## Sustainable heating and cooling



As exclusive MAXA distributors in Ireland, Hevac has made a wealth of innovative sustainable heating products and solutions available to the Irish installer market, to help work towards lowering carbon emissions.

Hevac's Specification Manager, Paul Devereux – responsible for its commercial and industrial range of heat pumps and chillers – explained, “Today, it is all about making the primary energy source of buildings environmentally friendly while, at the same time, reducing their carbon footprint. In MAXA, we have a range of options that deliver 100% to that brief, thanks to continuous investment in R&D that results in a constant stream of innovative products.

“Today's marketplace also demands products and system solutions that are energy efficient, sustainable and contribute to the circular economy. Here again, MAXA excels. For instance, with the MAXA air-cooled liquid chiller ranger featuring a reversible heat pump for outdoor installation, the ecological refrigerant R32 is used. Other features include the scroll compressor and axial fan. Meanwhile, the installation of a supplementary exchanger working

as a condenser in parallel to the air conditioning battery allows for sanitary hot water production independent from the unit working mode.

“Another example is the i-HP V5H R32 inverter heat pump range. These units reach high SEER and SCOP values thanks to the incorporation of DC inverter scroll compressors, EC fan exchangers and their high efficiency.

“They deliver high comfort levels with low energy consumption and can produce hot water up to 60°C, even in the coldest conditions. Test data is available for both low (35°C) and high (55°C) temperature applications, average climate conditions.”

The forthcoming change to R290 in the spring of 2023 will enable MAXA air source heat pumps to achieve higher temperatures, while also maintaining high efficiencies, as R290 is a natural refrigerant with a low Global Warming Potential (GWP).

Designed for outdoor installation (with an indoor ducted version available on request), the structure consists of high-thickness profiles made of hot-dip galvanised steel sheets. They are coated with polyester powder and a RAL 7035

bush-hammered finish that is resistant to weathering (classification of corrosivity similar to C3 according to EN ISO 12944-2:2017). The removable panels allow for easy maintenance inside the refrigeration circuit and the hydraulic circuit. Additional options available include super silencing, onboard inverter pump/buffer tank and a full range of BMS connectivity.

Paul concluded, “The current MAXA range is ideally suited to the Irish market, and we have supplied numerous projects throughout the country, including nursing homes, primary care centres, commercial buildings, leisure facilities and public libraries.

“Where the brief calls for energy efficient and sustainable heating and cooling, in MAXA we have the perfect solution, no matter what the application.”

**h Hevac**

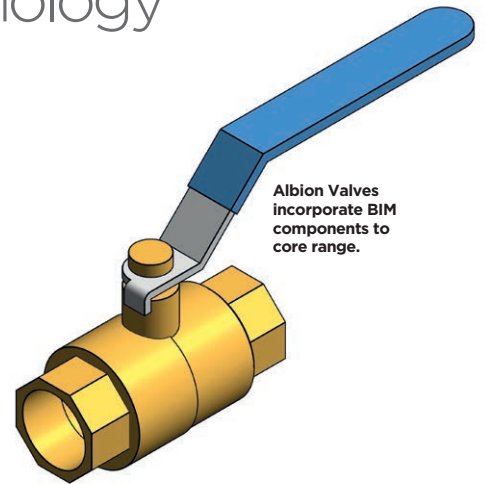
Contact: Paul Devereux  
M: +353 (0)86 173 8060  
T: +353 (0)1 419 1919  
E: paul.devereux@hevac.ie  
E: tender.enquiry@hevac.ie  
www.hevac.ie

MANUFACTURER - **ALBION VALVES**

# Albion Valves embrace BIM technology

Albion Valves (UK) Ltd, a leading valve supplier to the building services market, now includes Building Information Modelling (BIM) components for its core product range. The components will allow you to incorporate Albion into your HVAC, hot, and cold water systems right from the design stages of the project. The digital design also proves useful for maintenance engineers throughout the lifetime of the build, providing them with asset locations, valve dimensions and warranty information. The accompanying asset data incorporates key information such as dimensions, weights and flow rates, allowing the user to establish whether all components incorporated are compatible. Building specifiers, designers and contractors within the building services sector frequently utilise the tools

available to digitise the built environment, providing them with a detailed analytical view of a built asset during the design and construction of a project. The uptake of this new technology demonstrates that the plumbing and heating industry has recognised the need for a more efficient design and, more importantly, is willing to adapt. David Keys, Albion's Managing Director, commented, "With the massive benefits that BIM brings to design and build stages of construction, I have no doubt that it is going to completely revolutionise the industry. This new way of working both improves productivity and reduces risk, waste, and costs, not only through the construction phase but also for the lifetime of the build." Albion's BIM components are available to download free of charge from [www.albionvalvesuk.com/bim](http://www.albionvalvesuk.com/bim) or the [bimstore](http://bimstore).



Albion Valves incorporate BIM components to core range.



Contact George McGuire  
 T: +44 (0)7939 973 273  
 E: [gmcguire@albionvalvesuk.com](mailto:gmcguire@albionvalvesuk.com)  
[www.albionvalvesuk.com](http://www.albionvalvesuk.com)



## Always in safe hands

**When performance is critical, you can rest assured we've got it covered.**

When you're installing valves for critical building systems, there's no room for compromise on quality. Every Albion valve is designed and manufactured for robust, consistent performance. With relevant approvals – including WRAS and EN331 – and a five-year warranty on many products, you can be sure you're getting high-quality valves for every project.

**When it comes to product quality, we never drop the ball.**



[albionvalvesuk.com](http://albionvalvesuk.com)

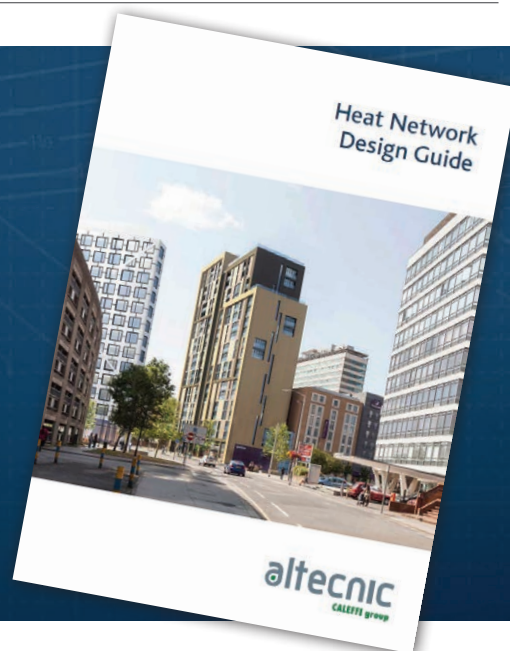
**In a league of our own.**





Chris Reilly, Altecnic County Manager ROI &amp; NI.

Altecnic Heat Network Design Guide.



IN THEIR LATEST HEAT NETWORK DESIGN GUIDE, ALTECNIC ADVISES HOW BEST TO OPTIMISE EFFICIENCY AND CREATE RELIABLE, SUSTAINABLE HEATING SYSTEMS...

## New guide helps make heat networks more efficient

With the number of UK heat networks set to grow and continuing government investment, Altecnic has provided a cohesive guide that advises how best to optimise efficiency and create reliable, sustainable heating systems. The Altecnic Heat Network Design Guide aims to ensure specifiers, consultants, and contractors achieve the designed system performance post-build, with a look at how maximum energy savings from heat interface units (HIUs) can only be achieved if the system is designed, installed, and commissioned correctly. To provide context for the advice given, the guide begins with a review of the latest independent resources and best practice for heat network design. These include the CIBSE CP1 (2020) Heat Network Code of Practice, the UK Standard for Heat Interface Units, SAP

rating, low return temperatures, building regulations considerations and BSRIA guide information.

### BEST PRACTICES

Following this, the guide makes recommendations for HIU selection, primary pipe-work layout and sizing, primary flow rate calculations, radiator valves, dirt and air separators, and recommends particular system components. These are all provided with detailed descriptions of the best practices of installation and product selection. As a further tool, the guide details system sizing and HIU selection, including distinguishing between direct and indirect HIUs for specific building types. The document illustrates the differences between a 'poor' system layout, a 'better' system layout, and the 'best' system layout to better educate readers. Looking to the future, the guide advises

on the commissioning of a heat network and how to ensure that optimal efficiency is maintained throughout the life of the system. This includes pre-commissioning checks, balancing the radiator circuits, conducting domestic hot water capacity testing, and balancing the heating system.

“All recommendations are provided with detailed descriptions of the best practice of installation and product selection.”



COPIES OF THE ALTECNIC HEAT NETWORK DESIGN GUIDE CAN BE REQUESTED USING THE QR CODE.

For more information, contact Chris Reilly, Country Manager for Ireland, on +353 (0)85 215 2288 or e-mail [chris.reilly@altecnic.co.uk](mailto:chris.reilly@altecnic.co.uk) or Gary Swann, Northern Ireland Sales Manager on +44 (0)7760 596727 or e-mail [gary.swann@altecnic.co.uk](mailto:gary.swann@altecnic.co.uk) or visit the website at [www.altecnic.co.uk](http://www.altecnic.co.uk)





# Meet the new EHS Mono HT Quiet

High temperature, low Noise,  
optimal performance

Samsung's newest eco heating system is the ideal heating solution for Europe's residential renovation market. Durable and stylishly designed, this heat pump combines advanced features and new technologies to achieve hot water temperatures of up to 70°C<sup>1</sup> for domestic heating purposes. It operates at noise levels as low as 35 d(BA)<sup>2</sup> using a 4-step Quiet mode. It is also capable of reliably providing 100% heating performance\* even at temperatures as low as -25°C<sup>3</sup>. Installation and maintenance of the unit is easy and hassle-free, with its internal parts being accessible via a side panel which can be removed by simply undoing 3 screws.

1. Leaving water temperature, when the outdoor temperature is between -15°C - 43°C. Results may vary depending on the actual usage conditions.

2. Based on internal testing of the EHS Mono HT outdoor units. The noise level is measured 3m away from the front of the outdoor unit, in an anechoic room with an outside temperature of 7°C. Results may vary depending on environmental factors and individual use.

\*Efficiency ratio of heating output (capacity) versus power input (electricity). Internally tested under lab conditions based on EN 14511, results may vary depending on the actual usage conditions.

3. Based on internal testing on an EHS Mono HT outdoor unit (AEI20BXVDGG), compared to a conventional EHS outdoor unit (AEI20RXVDGG). Results may vary depending on the actual usage conditions.

The Quiet Mark certificate is applicable for UK & EU territories only.



JOULE KODIAK CYLINDER BRINGS HOST OF BENEFITS FOR INSTALLER AND END-USER...

# Improved performance and faster heat up times

The SmartPlumb Kodiak by Joule is the most innovative pre-plumbed solution for heat pump systems.

The next generation compact pre-plumbed pack is designed to control the distribution of heat to each zone, providing a unique, modular zonal control manifold for heating and hot water systems. Joule has optimised the layout of the pre-plumb, developing a patented hydraulic design while also making it easier and faster to install the cylinder with improved access for the installer.

The Joule Kodiak cylinder provides improved performance and faster heat up times using smooth tube coil.

Pre-plumbed cylinders come complete with integrated hydraulic components and advanced controls. Designed to minimise floor space and footprint, while still offering optimum performance, the cylinder completely integrates with the Samsung monobloc air source heat pump range.

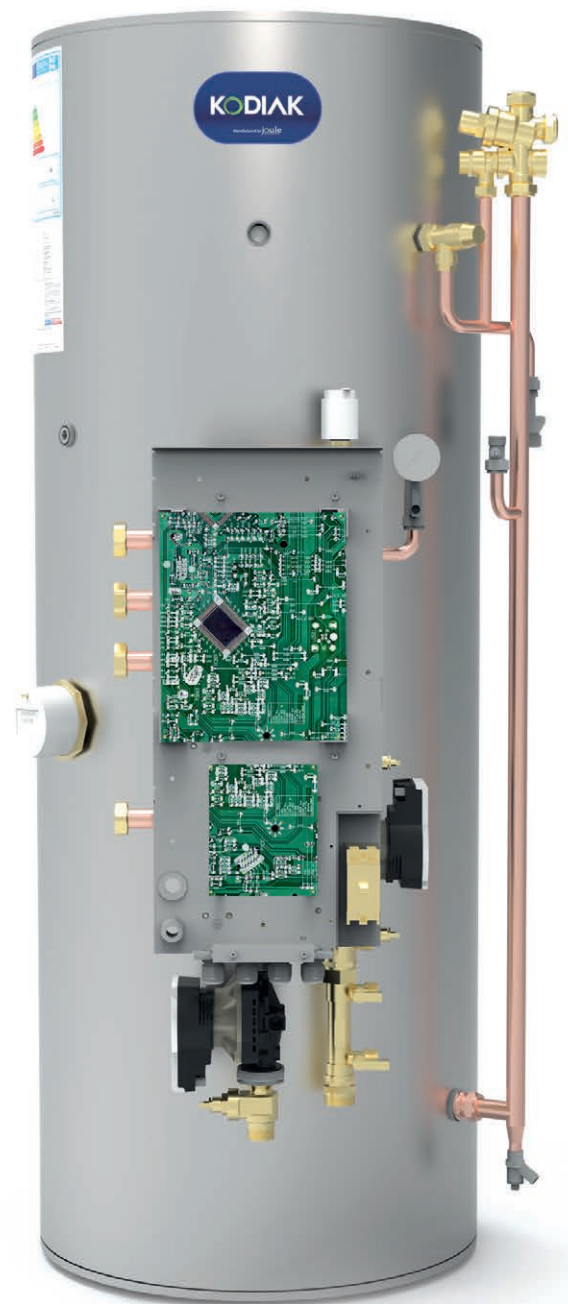
The hydraulic heating control section consists of; 2-port valve and motors, an ERP rated 7m circulating pump, pre-plumb hot water pipework, a by-pass valve, filling point connection, and automatic air vent.

Joule has developed a wide-ranging portfolio of solutions for heating, hot water, and ventilation systems. So whether it's a heat pump, underfloor heating, our InvaVent ventilation range, or its industry-leading extensive range of hot water cylinders, Joule has the solution for you.

It's technical sales team is available to offer you a professional and dedicated service with a reliable supply chain along with competitive pricing for any project.

At Joule, customer support and service does not end when you have purchased and installed your system. The dedicated internal and external technical support team will ensure your enquiry will be dealt with professionally and within a timely manner. Joule has a dedicated nationwide network of highly trained and experienced customer support engineers, so you can rest assured that you're in safe hands.

Offering a one-stop solution to your requirements, Joule will correctly design and indemnify your proposed heating and ventilation installation, from a standard small domestic heating installation to a commercial solar thermal system. Systems will be designed to ensure a high level of comfort and



energy efficiency for the homeowner and with Joule's comprehensive product range, it can offer solutions for any project or budget.

Joule will work with your design team to assess your requirements and suggest solutions and deliver a comprehensive bespoke technical package to include product specification, full schematics, and drawings which will be in accordance with current building regulations and best practices. It also offers commissioning, ancillary certification, and technical support plus installer training across our product range.

**joule**  
manufacturing excellence

T: +353 (0)1 623 7080

E: [info@joule.ie](mailto:info@joule.ie)

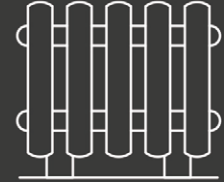
[www.joule.ie](http://www.joule.ie)



Heat Pumps



Boilers



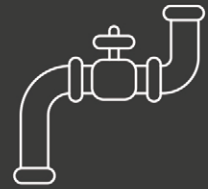
Radiators



Sanitaryware



Consumables



Piping

# Did You Know?

We have a 6,000 Square Foot  
Bathroom & Home Showroom?







WITH A STRONG PORTFOLIO OF BRANDS AND FIRST-CLASS SERVICE AND EXPERTISE, PLUMBING AND HEATING DISTRIBUTOR WBC PLUMBING SUPPLIES PLAN TO GROW STEADILY AS A REFERENCE IN THE INDUSTRY...

WBC Plumbing supplies team (L-R): Karl Monahan, Manager Richard O'Brien, Assistant Manager Paul Kavanagh, Shane Gallagher, Bryan Smith, Daniel Kenny and Luke Healy.

# Customers' needs come first

Based in Drogheda, WBC Plumbing Supplies are an expert distributor of domestic, commercial and industrial plumbing and heating supplies. Over the past 13 years, the WBC Plumbing Supplies team has grown to include an array of expert staff who provide outstanding service and have an unparalleled amount of product knowledge. Since 2017, WBC Plumbing Supplies have been based on the North Road in Drogheda, just off the M1 motorway.

Customers are at the centre of everything WBC Plumbing Supplies do. They aim to be an integral part of their customers' supply chains, developing strong relationships and always putting their customers' needs first.

WBC Plumbing Supplies offer a strong portfolio of brands to customers with Ideal Energy, Joule, Sonas Bathrooms, Grundfos, Sanbra Fyffe and Coast Sales

to name but a few. The company only supply high-quality products from certified manufacturers, which all meet required industry standards as to performance and durability.

At WBC Plumbing Supplies, all the staff aim to provide the best possible service to all customers. The ethos of being "entirely customer-focused" is evident throughout the trade counter to the shop floors and behind the scenes. Company Directors Derek and Garrett Wogan are supported by Manager Richard O'Brien who oversees the whole plumbing department. Staff include Luke Healy, Karl Monahan, Shane Gallagher, Daniel Kenny and Bryan Smith. In addition, Assistant Manager Paul Kavanagh is responsible for the day to day running of the company.

What makes Wogan's workforce stand out from the crowd is that each customer is treated as a close friend.

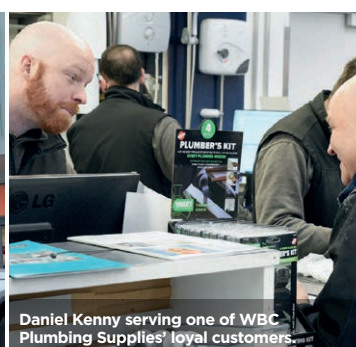
It aims to supply first-class service and expertise to everyone who walks through its door. The whole sales team is experienced and fully qualified to answer technical questions to ensure it is providing products, solutions and services that will help customers succeed. Every day the team are enriching themselves by learning about the latest trends and new technology in the industry and keeping up to date with what customers are looking for. Over the next five to 10 years, the company envisage WBC Plumbing Supplies growing steadily into a well-known name in the industry that customers can trust.



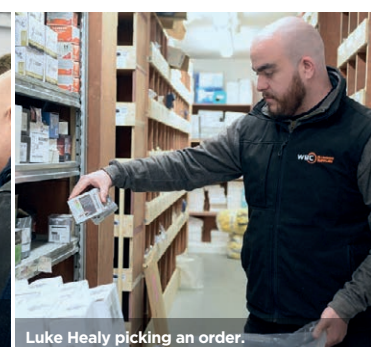
T: +353 (0)1 200 3004  
E: info@wbcplumbing.ie  
www.wbcplumbing.ie



L-R: Assistant Manager Paul Kavanagh, Manager Richard O'Brien and Luke Healy.



Daniel Kenny serving one of WBC Plumbing Supplies' loyal customers.



Luke Healy picking an order.





# Flamin' great savings this winter

Switch from a standard efficiency boiler, to a Firebird world-leading condensing boiler and save.

## Costs

### Makes financial Sense

Firebird Envirogreen Condensing Boilers are **25%-30%** more efficient than a Standard Efficiency Boiler.

### Here's Why

- With an efficiency of **97.5%**, Firebird Envirogreen condensing boilers use less fuel than a standard efficiency boiler, therefore reducing energy costs.

## Cost savings with Firebird

This table shows the savings you can make when you upgrade from a standard efficiency boiler to a Firebird condensing boiler, based on a 4 bedroom home.

House Built	Region	Standard Efficiency	Condensing Boiler	Saving
1980s	ROI	€4769	€3469	€1300
2006	ROI	€2659	€1770	€889



Save up to **€1,300** per year on heating bills



[www.firebird.ie](http://www.firebird.ie)

**IRL:**  
+353 (0)26 45253  
sales@firebird.ie

**NI:**  
+44 (0)28 3088 8330  
salesni@firebird.ie



Statements made by Firebird based on Sutherland Tables figures are the responsibility of Firebird, and do not reflect the views of Sutherland Tables.





FIREBIRD OFFERS PRODUCTS WITH INCREASED FUEL EFFICIENCY, REDUCED EMISSIONS AND WHICH USE MORE RENEWABLE AND SUSTAINABLE FUEL SOURCES...

## Innovation in heating solutions

As we all look towards savings on outgoings going into each winter, boiler efficiency is high on the list for consumers, installers and the industry as a whole.

Firebird, manufacturer of high-performance heating solutions, has dedicated significant resources and invested heavily in developing products with increased fuel efficiency, reduced emissions and which use more renewable and sustainable fuel sources. Thanks to this drive towards innovation, Firebird now has the most efficient liquid fuel boilers on the market at 97.5% efficiency and NOx emissions as low as 60mg/kWh, half the EU limits.

Research from The Sutherland Tables September 2022 findings shows that by upgrading from a standard efficiency boiler in a house built in the 1980s to a high-efficiency Firebird condensing boiler, there can be average savings of €1,300 per year on heating bills. As one recent Firebird Trustpilot reviewer stated, "My oil doesn't go down as quickly and it gets hotter quicker."

These savings would help to alleviate

the current pressure on households and businesses which have seen home heating oil almost double in price. Plus, by using less oil, these boilers are much kinder to the environment, as well as to the bank balance. Firebird's boilers are also fully compatible with Hydrotreated Vegetable Oil (HVO). A viable and sustainable drop-in replacement to kerosene, HVO is fossil-free and can reduce household emissions by up to 90%. Leading the charge in innovation, Firebird has trialled and tested HVO in Ireland and the UK to prove that it can be implemented almost immediately. The conversion requires little or no modification to existing home heating systems – no significant investment beyond a small conversion cost, (approx. €400) to upgrade to a Firebird by Elco HVO burner.

Mark Doyle, General Manager with Firebird explained how the introduction of HVO for household and commercial boilers would be an instant game-changer for home heating.

"There are 1.5 million or so homes with existing liquid fuel boilers in Ireland

with few other choices available for homeowners to adopt cleaner, greener heat solutions," he stated. "HVO can work with any liquid fuel boiler and if used in homes, can potentially make them almost carbon neutral immediately. Our trials of HVO for home heating in Ireland have proven how household greenhouse gas emissions could be reduced by 90% with CO<sub>2</sub> emissions decreasing by up to six tonnes annually, per home."

Mark Doyle added, "We at Firebird passionately believe that we all have a part to play to reduce carbon emissions and we believe HVO is not the future, it's the 'now'. Our responsibility to our customers and the environment is the key driver behind everything we do."

Firebird's manufacturing site in Ireland and offices in England and Northern Ireland are already fuelled by HVO, and the benefits can be seen every day.



For more information, visit [www.firebird.ie](http://www.firebird.ie) or email [sales@firebird.ie](mailto:sales@firebird.ie)

# A COMPLETE GAS BOILER LINE UP

 warmhaus

Vokèra  
BY RIELLO

ideal  
HEATING

BAXI

 WORCESTER  
Bosch Group

VIESSMANN



# Heat Merchants

Heat Merchants now have Ireland's largest selection of gas boilers, accessories and spare parts all now available to order online or from our branches nationwide.

**NOW STOCKING IDEAL BOILERS**

090 6424000 | [enquiries@heatmerchants.ie](mailto:enquiries@heatmerchants.ie) | [www.heatmerchants.ie](http://www.heatmerchants.ie)





“Now we are able to offer our customers a complete gas boiler line-up with all their preferred brands”

William Connell, Heating Product Manager Heat Merchants.

WITH THE ADDITION OF IDEAL GAS BOILERS TO THEIR RANGE, HEAT MERCHANTS NOW HAS IRELAND’S LARGEST SELECTION OF DOMESTIC GAS BOILERS, ACCESSORIES AND SPARE PARTS...

## Winning gas boiler line-up

With a network of 31 branches across Ireland, Heat Merchants supplies a comprehensive portfolio of heating, plumbing and renewable energy solutions for both domestic and commercial projects. With the addition of Ideal boilers to their range, Heat Merchants now has Ireland’s largest selection of gas boilers, accessories and spare parts so there is an option to suit every installer.

“With a full portfolio of gas boiler brands we are able to offer complete installation packages to our customers,” commented Heating Product Manager William Connell. “With stock available in all branches for immediate collection and back-up stock available as soon as next day, customers can avail of a service that is more comprehensive than ever.”

### A COMPLETE GAS BOILER SELECTION

The Ideal Heating gas boiler range joins other established brands offered by Heat Merchants, including BAXI, Warmhaus, Worcester, Vokera and Viessmann. The Ideal range consists of the 7-year warranty Ideal Logic, the 10-year Logic Max, and the 12-year Vogue Max. The Logic and Logic Max ranges are available in heat only, system and combi variants, while the Vogue Max is available as a system or combi.

### PROMPT DELIVERY

Heat Merchants stocks in excess of 4,000 boilers from all the leading brands throughout the branch network and central distribution hub. This, along with the wide range of spares and boiler accessories, means that Heat Merchants can now offer a full range of boilers to the domestic market, catering for all preferences and budgets. This makes them a convenient One Stop Shop for gas boiler installers.

Gas boilers and spares are available to registered Gas Installers in branches nationwide or online at [www.heatmerchants.ie](http://www.heatmerchants.ie)

**Heat Merchants**

T: +353 (0)90 642 4000

E: [enquiries@heatmerchants.ie](mailto:enquiries@heatmerchants.ie)

[www.heatmerchants.ie](http://www.heatmerchants.ie)



MANUFACTURER - **ALTECNIC**

Anti-freeze valve.

Mark Mogeey,  
Altecnic.

HEAT PUMPS CAN BE A COSTLY INVESTMENT. MARK MOGEY, HEAD OF OEM SALES AT ALTECNIC, EXPLORES TWO COMPONENTS THAT CAN HELP PROTECT AND MAINTAIN THE EFFICIENCY OF THESE SYSTEMS...

## Protecting and optimising heat pump installations

Heat pump installations are growing in popularity as they improve the efficiency of energy systems and can reduce bills by up to 26%\*.

Heat pumps can be a costly investment that needs to be protected and, as such, careful consideration should be used when selecting components to optimise and protect each part of the system. So, what can be done to protect and maintain the efficiency of these systems? Here, Mark Mogeey, Head of OEM Sales & ROI at Altecnic, explores two components which, if installed correctly, can help protect and optimise heat pumps.

### ANTI-FREEZE VALVES

Anti-freeze valves are a cost-effective solution to protect heat pump installations from freezing, which is a common problem during the winter.

### HOW THE ANTI-FREEZE VALVE WORKS

An anti-freeze valve is designed to be installed in the flow and return pipework

from the heat pump and installed on the external pipework. By opening at temperatures below 3°C, an anti-freeze valve allows system content to be dripped and discharged safely, preventing the system from freezing and protecting the installation. At temperatures above 4°C, the valve then shuts again to stop unnecessary draining. Overall, it does exactly as it implies, as it prevents the freezing of heat pumps and pipework. With the valve designed specifically for heat pump installation, it is compact and easy to install.

### PROTECTION FOR EXPOSED INSTALLATIONS

Even for installations in areas that are especially exposed – those that are usually hit hardest by freezing – an anti-freeze valve can continue to function efficiently. The anti-freeze valve becomes especially useful in the coldest months as it helps to save thousands of pounds in having to replace frozen installations by maintaining the heat pump and pipework.

### PROTECTION AND OPTIMISATION

When the heat pump installation is protected, it can then be optimised to work as efficiently as possible. The efficiency within the system relies on the 'start-up' period of the heating cycle being correctly balanced, thus preventing it from pulling an excessive amount of energy. If a heat pump installation were to draw a large amount of energy, then the end-user should expect there to be a negative impact on the operation of the entire system.

### INDEPENDENTLY MANAGING FLOW RATES

Any system that has a heat pump as its energy source would benefit from installing an automatic dynamic balancing valve. By accurately managing the flow rates throughout the heating circuit using a flow-settable, pressure-independent, thermostatic radiator valve (TRV), an installer can optimise their design and ensure each part of the

**altecnic**  
CALEFFI group

“Anti-freeze valves are a cost-effective solution to protect heat pump installations from freezing, which is a common problem during the winter.”





Heat pumps in action.

system receives the correct amount of energy independently, thus increasing the working life of the compressor within the heat pump.

In addition, any hydronic circuit serving a secondary system must be balanced, meaning that they must be constructed in such a way as to guarantee the design flow rates of the thermal medium. Due to this, specific balancing devices are required depending on the varying system types and appliances used.

#### AUTOMATIC DYNAMIC BALANCING

Automatic dynamic balancing and pressure-independent adjustment of the heating system are vital for the optimisation of a heat pump installation.

A TRV with this ability, in conjunction with thermostatic, electronic, or thermoelectric control, combines different functions in a single component. An automatic dynamic balancing TRV can balance the heating system automatically, ensuring each terminal receives the set flow rate. Even in the case of partial circuit closure, using the regulating valves, the flow rates in the open circuits remain constant at the set value - a vital feature when being installed on systems powered by heat pumps.

By using this type of TRV, in combination with thermostatic control heads, the surrounding temperature can remain automatically constant, guaranteeing effective energy saving.

#### GETTING THE MOST OUT OF YOUR HEAT PUMP INSTALLATION

With no room for damage, both the installation of an anti-freeze valve and an automatic balancing TRV protect the end-user's investment and the installers' hard work. Given the installation costs of renewable technologies compared to standard gas or oil alternatives, the benefits of a relatively small outlay to protect this investment are clear.

To make the optimisation and protection of a heat pump installation as easy as possible, Altecnic offers the highest quality Caleffi 108 anti-freeze valve, as well as the Dynamical® TRV. Both installers and end-users can get the most out of their heat pump installations by utilising these products.

*\*Source: "What Are the Costs of Ground-Source & Air-Source Heat Pumps?" blogpost at [www.greenmatch.co.uk](http://www.greenmatch.co.uk)*

"To make the optimisation and protection of a heat pump installation as easy as possible, Altecnic offers the highest quality Caleffi 108 Anti-Freeze Valve, as well as the Dynamical® TRV."

For more information, contact Chris Reilly, Country Manager for Ireland, on +353 (0)85 215 2288 or e-mail [chris.reilly@altecnic.co.uk](mailto:chris.reilly@altecnic.co.uk) or Gary Swann, Northern Ireland Sales Manager on +44 (0)7760 596727 or e-mail [gary.swann@altecnic.co.uk](mailto:gary.swann@altecnic.co.uk) or visit the website at [www.altecnic.co.uk](http://www.altecnic.co.uk)

**altecnic**  
CALEFFI group



# Waterford Stanley Renewables

Replace your inefficient immersion heater or hot water tank with a highly efficient Domestic Hot Water Heat Pump



## KEY FEATURES

- User friendly touch controller
- Wrap around Micro-Channel Heat Coil
- Tranquil Flow Technology
- Easy installation
- Constant hot water supply
- Low Noise 45 DB(A)
- Eco-friendly R134a refrigerant
- 200 Litre Water Tank Capacity
- Rated Heating Capacity: 2.5kW
- Water Outlet Temperature: 38°C ~ 60°C
- Dimension (mm): Ø560 x 1730 (H)
- Weight (Kg): 105



We also supply and design for Split and Monobloc Heat Pumps and underfloor heating.

**Contact:** Gavin Dallas  
Business Development Manager (Renewables)

**Mobile:** +353 (0) 87 183 8131

**Email:** [gavindallas@waterfordstanley.com](mailto:gavindallas@waterfordstanley.com)

**VISIT US AT BELFAST PLUMBEX STAND P4**  
[waterfordstanley.com](http://waterfordstanley.com)



SUPPLIER - **STANLEY**

WHEN CHOOSING A HEAT SOURCE FOR HER NEW BUILD, EMER WHELAN OPTED FOR A RELIABLE BRAND NAME AND AFFORDABLE NEW TECHNOLOGY - STANLEY'S SPLIT HEAT PUMP SYSTEM...

## Case study: Kinnegad, Co. Westmeath

With a proven record of heating Irish homes for over 80 years, Waterford Stanley is looking to the future by offering a renewable heating product range of Split and Monoblock heat pumps, domestic hot water heat pumps and underfloor heating systems. An extensive design and support service underpins the product range in providing heat loss calculations, heat pump certification, underfloor heating design and designer sign-off certification - all part of Waterford Stanley's service to ensure products meet building regulations requirement.

Emer Whelan took advantage of the technical know-how and support when choosing to install the Stanley WSLHP 7kW Split heat pump system while building her new home. Here, she talks us through her decision-making process:

**P&H: Why choose a Stanley heat pump?**

**Emer:** We shopped around, and I came across Stanley Heat Pumps online. The person we dealt with was very helpful and that made the decision for us. The Stanley brand is well known and has been around for a long time. The pricing



Emer Whelan and her Stanley WSLHP 7kW Split heat pump.

we got from Stanley stacked up against the other brands and worked out better. When you are building a home everything is budgeted for, so any savings you can make are important!

**P&H: What did you like about the whole experience?**

**Emer:** The fact that Stanley commission their own heat pumps once installed. My uncle, a builder, was very impressed with the fact that Stanley commissioned their heat pumps as he had not seen that before. It gives you peace of mind when Stanley come out afterwards, to ensure everything is installed correctly. Once the heat pump is installed, there is very little to do afterwards. The thermostat is on the wall and you set your temperature. Once we get WiFi, the plan is to set this up as well.

**P&H: Have you noticed a change in heating bills?**

**Emer:** We were staying at our parents' house previously, and there was always a chill; but we are always warm in our new home. We have only been in the house for three months so we can't make an

“It gives you peace of mind when Stanley comes out afterwards, to ensure everything is installed correctly.”

accurate price comparison. Anyway, we understand that this is a long-term investment.

**P&H: What do you love about the Stanley heat pump?**

**Emer:** We loved that we were able to talk directly to Noel Hannan in Stanley and get all the technical information and support. Even when he was at home with a broken foot, he answered our calls!



Stanley WSL142 internal unit with 200l DHW and 50l buffer.



For more information on Waterford Stanley's range of products, visit: [www.waterfordstanley.com/renewable-heating/heat-pumps](http://www.waterfordstanley.com/renewable-heating/heat-pumps) or contact Gavin Dallas on +353 (0)87 183 8131 or [gavindallas@waterfordstanley.com](mailto:gavindallas@waterfordstanley.com)





# Build warmth with Grant

Our complete integrated heating packages provide everything needed to build a highly efficient, warm and comfortable home.

Tailored to suit the homeowners' requirements, each Grant heating package is correctly sized and specified, free of charge, to achieve compliance, maximise efficiencies and provide long-term savings.

Packages feature the Grant Aerona<sup>3</sup> air to water, air source heat pump, Grant hot water cylinders, Grant Afinia aluminium radiators and the Grant Uflex underfloor heating system. Smart controls are also available.

Trust Grant on the journey to warmth and comfort by sending house plans to [heatpump@grantni.com](mailto:heatpump@grantni.com)

[www.grantni.com](http://www.grantni.com)

#ThinkHeatingThinkGrant



MANUFACTURER - GRANT



Grant Smart heating controls.

SEE TIPS TO HELP EDUCATE YOUR CUSTOMERS ON HOW TO MAXIMISE PERFORMANCE AND KEEP COSTS DOWN WITH THEIR GRANT HEAT PUMP ALL YEAR ROUND...

## Ensuring optimum efficiency with the Grant Aeronas<sup>3</sup> R32 heat pump

As more new build properties and developments opt for renewable heating technologies, the Grant Aeronas<sup>3</sup> R32 air-to-water, air-source heat pump continues to deliver highly efficient, environmentally friendly heating.

Barry Gorman, National Renewables Sales Manager at Grant, outlines some of the ways that installers can help to educate their customers on how to ensure that their Grant Aeronas<sup>3</sup> heat pump delivers optimum efficiency all year round.

"To ensure the heat pump's efficiency, the homeowner needs to understand how the system operates and to use the heating controls so that during seasonal changes the heat pump operates at its most efficient.

"Room thermostats should be kept at comfortable levels and adjusting them regularly should be avoided, especially when it is colder outside. If temperatures are adjusted frequently, the heat pump is effectively asked to work harder to generate more heat than required and this can affect the system's performance and efficiency. If required, lower the

temperature by 1°C or 2°C maximum. Switching off the heat pump completely should also be avoided, even if the house feels warm enough, hot water isn't needed, or the idea is to save money. "Once the system is turned back on again, the heat pump will have to work extra hard in the colder months, using a lot more electricity to reach its optimum performance level once more. "During installation, the plumber or installer will set the temperature of the hot water to around 47°C on the cylinder thermostat. Whilst adjusting this higher will increase the temperature, it will also elevate running costs unnecessarily. If the outdoor temperature is unseasonably cold, using the immersion timer to boost the water temperature is a more efficient and cost-effective option. The "boost" frequency depends on hot water demand, and this option will allow the heat pump to concentrate on the heating system. "Finally, it is important to remind customers of the importance of regular annual servicing to ensure the heat pump unit operates efficiently and to maintain warranty terms."

### The Grant Aeronas<sup>3</sup> R32 air-to-water, air-source heat pump

Grant's innovative Aeronas<sup>3</sup> R32 air-to-water, air-source heat pump can help a new build property achieve compliance with building regulations in Northern Ireland and the Republic of Ireland.

With an ErP rating of A+++, the Grant Aeronas<sup>3</sup> is the heat pump of choice for many plumbers and installers.

Available in outputs of 6kW, 10kW, 13kW and 17kW, the market-leading ASHP also offers a superior seasonal coefficient of performance (SCOP) even in colder conditions.

Championing exceptional efficiency, the Aeronas<sup>3</sup> delivers over four times the amount of energy for every 1kW of energy used. The 13kW and 17kW models have also been recognised for their quiet operation by the internationally acclaimed Quiet Mark.

Grant Aeronas<sup>3</sup> R32 10kW air-to-water air-source heat pump.

Contact the Grant Technical Team:

T: 0800 0443261 (NI)

T: +353 (0)57 912 6968 (ROI)

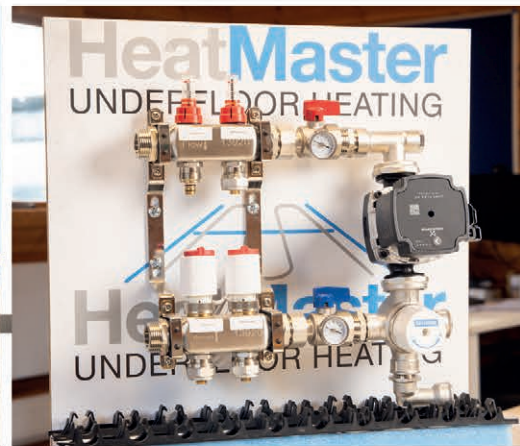
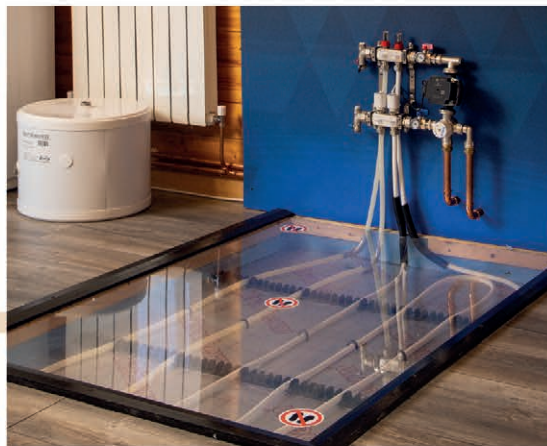
www.grant.eu

Follow Grant online: Facebook, Twitter and Instagram @mygrantNI @grantirl





**Plumbmaster™**  
**RENEWABLES HUB**



FROM CONTRACTORS TO SELF-BUILDERS,  
ALL CUSTOMERS ARE WARMLY WELCOMED.

CALL US ON **028 3031 6615**, VISIT  
YOUR LOCAL BRANCH OR EMAIL  
**WAYNE.GRIBBEN@PLUMBMASTER.COM**

NEWRY • BANGOR • PORTADOWN • LISBURN • BELFAST  
COLERAINE • LARNE • BALLYMENA • ENNISKILLEN

A PART OF  **HALDANE FISHER**



SAVE TIME, BUY ONLINE

**Plumb-master.com**



## SUPPLIER - PLUMBMASTER



THE POPULAR RENEWABLES HUB AND ITS STAFF HAVE BEEN BUSY USING AN EXTENSIVE RANGE OF GREEN TECHNOLOGY TO KIT OUT ALL SORTS OF BUILDING PROJECTS...

## Plumbmaster marches on with green energy solutions

Plumbmaster has continued to prove their worth in the renewable energy industry. The popular Renewables Hub and its staff have been busy using an extensive range of green technology to kit out newly built homes, retrofit existing homes and facilitate commercial properties.

A recent success story saw a 3200sq foot bungalow built by Declan Mullen Contracts, fitted with a Grant 13kW AERONA<sup>3</sup> Heat Pump and an installation of Plumbmaster's very own Heatmaster Underfloor Heating Kit, as well as the Brookvent Air Cycle 3.1, a Mechanical Ventilation Heat Recovery (MVHR) system, for improved air conditioning. The Plumbmaster client brief indicated the importance of fitting products that were effective in heating the home whilst being economically efficient, and so once priorities were established, the Plumbmaster team provided their expert product recommendations, all of which are available through the hub. With a low-flow temperature of just 30°C, supplied by the Grant 13kW

AERONA<sup>3</sup> Heat Pump, the newly built bungalow in question will have very low running costs. The AERONA<sup>3</sup> will prioritise the hot water demand, supplying ample hot water even on the coldest days of the year.

The Heatmaster Underfloor Heating Kit was entirely concealed once installed, ensuring the practicality and aesthetics of the room were not disturbed. The underfloor heating kit is also very flexible when it comes to design, which proved to be beneficial to Plumbmaster when working with their client on this property.

The newly fitted MVHR system will provide the Plumbmaster customer with clean filtered air to the whole property, ensure a 92% heat recovery efficiency, and reduce running costs for home heating by up to 50%.

The popularity of the Renewables Hub is proving to have some long-lasting effects too. With continued growth in the green energy sector not only within Plumbmaster but in the industry as a whole, the Newry-based firm is now proudly able to merge renewables into

their trade with domestic and commercial customers alike.

Thanks to continued business out of the hub, commercial customers have been able to use renewables to save on their energy bills while remaining environmentally conscious.

Wayne Gribben, Renewables Consultant at Plumbmaster, commented, "It is great that we are now using renewables in the commercial trade. The opportunity here is massive, not only for us as a business but also to make a real difference in reducing dependence on fossil fuels too."

Diversification within Plumbmaster does not stop at renewable heating technology either. The business also has the capacity to offer equipment for fully furnished bathrooms and suites with its sister company, Bathline, recognised as experts in the field.

 **Plumbmaster**  
PLUMBING & HEATING MERCHANTS

If you would like to find out more, visit [www.haldanefisher.com/plumbing-heating/html/](http://www.haldanefisher.com/plumbing-heating/html/) or call +44 (0)28 3031 6615.

INNOVATIVE,  
RELIABLE,  
EFFICIENT.

WARMFLOW  
**Zeno**

Air Source Heat Pumps

50  
YEARS

KEEPING FAMILIES WARM



**WARMLINK APP CONTROL**

Remote control & diagnostic capability through the cloud based app.



**HIGH TEMPERATURE OUTPUT**

Flow temperature up to 60°C means domestic hot water (DHW) can be produced without the need for additional heat sources.



**USER-FRIENDLY TOUCHSCREEN INTERFACE**

Covering all aspects of heat pump and system control



**3 MODELS**

Zeno 8kW, 12kW & 20kW



## MANUFACTURER - WARMFLOW



Self builder, Mrs Ferguson chose Warmflow's Zeno Air Source Heat Pump and Nero 300 litre hot water cylinder to provide heat and hot water for her ultra-modern, energy-efficient new build.



Warmflow's Zeno AS03 was top choice to heat this large new build, with its whopping 20kW of heat energy providing hot water temperatures of up to 60°C.

AWARD-WINNING MANUFACTURER WARMFLOW HELPS SIGNIFICANTLY BOOST THE ENERGY EFFICIENCY OF A NEW BUILD HOUSE, WITH THE FITTING OF ITS NEW ZENO AIR SOURCE HEAT PUMP...

## Warmflow's Zeno heat pump is first choice for large new build project

When property owner Mrs Ferguson set out to create a sustainable and environmentally friendly home that was practical, sleek and modern, she turned to Warmflow to provide a clean, efficient and effective heating source.

"I wanted a heating solution that would keep me warm, provide me with hot water as well as being environmentally friendly, and the Warmflow Zeno air source heat pump ticked all the boxes," she said.

Installer Richard Bentley recommended this heat pump as one of the most intelligent and efficient heat pumps on the market. "The customer wanted the heat pump installed alongside a Warmflow Nero hot water cylinder. This solution provides both heat and hot water. I selected the AS03 model of the Zeno heat pump range in order to meet the size demand of the property. The unit was dead easy to install and commission with the very clear, easy-to-use touchscreen controller. The unit itself also looks really

well and suits the house perfectly."

The home is 300m<sup>2</sup>, with 240m<sup>2</sup> being heated living space. The perfect solution to heat this large new build was the Zeno AS03, which outputs a whopping 20kW of heat energy, providing hot water temperatures of up to 60°C. This supplies the underfloor heating throughout the whole ground floor. Alongside the AS03 heat pump, the installer chose a Warmflow Nero 300 litre hot water cylinder so that Mrs Ferguson will never run out of hot water. In addition to the natural wood cladding and renewable heating solution, this project also planted a tree in the heart of the building, providing a mini utopia. Sustainability is literally at the heart of this new build. The building work was carried out and completed by Best Little Building Company.

GB Renewables Sales Manager Niel said, "The Zeno air source heat pump units are a brilliant heating solution for new builds. They offer excellent energy savings and can help reduce the end-user's carbon footprint," he added. "In this case, the

homeowner wanted a more energy-efficient and environmentally friendly heating solution for her home, and she has expressed her delight at the results. Underfloor heating had already been installed in the property, and heat pumps and underfloor heating systems pair together very well. This is because the underfloor heating requires lower flow temperatures of 35°C, meaning the heat pump in turn uses less electricity."

By downloading Warmflow's Warmlink app, the installing engineer simply scans the unique QR code on the side of each appliance and can then remotely monitor, fault find and control the unit from anywhere in the world.

Installer training is provided at Warmflow's 150,000 sqft manufacturing facility in Lisburn, Northern Ireland.

### WARMFLOW

Get in touch today to learn more about how you could be installing the future of home heating, E: [sales@warmflow.co.uk](mailto:sales@warmflow.co.uk)  
T: +44 (0)28 9262 1515.





# EXPLORE THE WORLD OF HEAT PUMPS

Bassetts Heating Innovation Centre is designed to provide you with the knowledge and confidence you need to install high-quality heating systems, such as heat pumps, solar and underfloor heating. Our renewables team will give you a good introduction into a range of products, the projects they are best suited to, any considerations, and practical installation advice. See and learn with a comprehensive range of working ASHPs and underfloor heating, all in one space.

## BOOK YOUR VISIT TODAY:

### Bassetts Heating Innovation Centre

37 Glenone Road, Portglenone,

Clady, BT44 8LD

T: +44 (0)28 2544 8678

E: [info@bassettonline.com](mailto:info@bassettonline.com)

[bassettonline.com](http://bassettonline.com)



**bassetts**  
bathrooms | heating | renewables



## SUPPLIER - BASSETTS



Chris McCready, Manager at Bassetts Heating Innovation Centre, Clady.



ECODAN AIR-SOURCE HEAT PUMPS ARE THE RENEWABLE, LOW-CARBON ALTERNATIVE TO TRADITIONAL HIGH-CARBON HEATING SYSTEMS AND CAN BE INSTALLED IN PROPERTIES OF ANY SIZE...

## Bassetts adds Mitsubishi heat pumps to range of renewable solutions

Bassetts has added the successful Mitsubishi Heat Pump range to their renewable offering. The bathroom, heating and renewable specialists are known for combining high-quality products with the highest standards of customer service and the addition of such a renowned range enhances this reputation even further. Paul McMenamin, Sales Director of Bassetts, said, "We are delighted to be adding the excellent Mitsubishi Ecodan Heat Pump range to our renewable solutions. We take great pride in partnering with only the best in the industry, and Mitsubishi certainly fits that mould.

"We have found that, with the cost-of-living crisis, our self-build customers are even more conscious of finding the best efficient-energy solutions, and the addition of Mitsubishi gives us a proven solution to meet these demands." From small flats to large, detached houses, and from office blocks to schools, Ecodan air-source heat pumps can be

installed in properties of any size and are the renewable, low-carbon alternative to traditional high-carbon heating systems. This reliable, renewable heating technology delivers highly efficient, sustainable space heating and hot water all year round and has been endorsed by TV presenter and architect, George Clarke.

One of the most advanced heating systems available for homeowners and businesses, Ecodan air-source heat pumps come with an A++ ErP Energy Rating Label across the range. The Mitsubishi heat pump solutions are available at any of Bassetts' 16 strategically located branches across Northern Ireland, with customers also able to benefit from design services for their projects.

Paul added, "We have over 40 years of experience in this industry and, as Northern Ireland's largest plumbing and heating merchant, we are perfectly positioned to meet the renewable needs of our customers."

### Free training and demos

Installers and customers can take a closer look at the many advantages of the Mitsubishi Ecodan range in action at the Bassetts Heating Innovation Centre, at the supplier's Clady branch. This innovative facility offers full demonstrations and training free of charge to installers who wish to explore the latest in plumbing and heating technology.

**bassetts**

bathrooms | heating | renewables

T: +44 (0)28 8772 6952

E: [info@bassettonline.com](mailto:info@bassettonline.com)

[www.bassettonline.com](http://www.bassettonline.com)

# PIPELIFE

## Renewable Heating Solutions

 UNDERFLOOR HEATING

 HEAT PUMPS

 SMART CONTROLS

 ECO HEATING PIPE

 HEAT RECOVERY

 AIR CON UNITS



### Discover Easy Comfort with Pipelife Eco

Pipelife is Ireland's leading designer and supplier of thousands of Home Heating Solutions each year. The Pipelife team work with everyone from homeowners, contractors, architects and consulting engineers across the country in projects ranging from residential homes, offices, hospitals, nursing homes, to warehouses, car showrooms and other commercial and industrial buildings.

Put Your Trust in Pipelife – 50 Years of Proud Irish Manufacturing and Serving the Irish Plumbing and Heating Industry.

[WWW.PIPELIFE.IE](http://WWW.PIPELIFE.IE) • T: 021 4884700 • E: [IRELAND@PIPELIFE.COM](mailto:IRELAND@PIPELIFE.COM)



 **Guaranteed Irish**  
All together better

 **PIPELIFE**  **50 YEARS**  
OF PROUD IRISH MANUFACTURING  
1970-2020

Our Reputation – Your peace of mind

**PIPELIFE**   
always part of your life



## MANUFACTURER - PIPELIFE IRELAND

LISTENING TO FEEDBACK FROM INSTALLERS, PIPELIFE IRELAND ADDS PREFABRICATED UNDERFLOOR HEATING TO ITS PORTFOLIO - TECHNICAL MANAGER, MICHAEL GEARY, EXPLAINS THE SOLUTION AND THE ADVANTAGES IT OFFERS...

## Prefabricated underfloor heating – the future of underfloor is here

Pipelife's prefabricated underfloor heating solutions provide a comprehensive service that covers everything from the design to the assembly and delivery of underfloor heating systems.

The prefabricated mats and prefab manifold cabinets boast exactly the same customisability and benefits as standard hydronic underfloor heating products while speeding up the installation process 3-6 times. The solution is particularly advantageous for large-scale building projects, such as residential complexes, row houses, hospitals, hotels and nursing homes.

From finding qualified workforce and meeting project deadlines to keeping up with increasing customer expectations and regulations, the plumbing and heating sector currently faces plenty of challenges. Developing end-to-end services material suppliers can help mitigate these issues, and prefabrication is one of the areas with large yet relatively untapped potential.

In many countries, like in the Netherlands for example, there is a growing demand for prefabricated underfloor heating mats. We wanted to combine such a product with other services that we have been offering to our clients, such as design support and preassembled manifolds, creating a unique, all-inclusive offer on the market.

Projects are frequently delivered late and exceed their original budget; prefabrication allows avoiding unplanned costs while taking significantly less time than traditional on-site installation. If installing standard underfloor heating in a room of 20m<sup>2</sup> typically takes 20-30 minutes, prefabrication allows completing the same task in just 5-7 minutes – offering major gains for contractors. Furthermore, Pipelife's prefabricated mats and manifolds are assembled in factory-controlled environments by



“...installing standard underfloor heating in a room of 20m<sup>2</sup> typically takes 20-30 minutes, prefabrication allows completing the same task in just 5-7 minutes.”

trained professionals using only top-quality materials. The process eliminates risks of typical installation errors, such as deviations from the drawing plan or incorrect connections.

As designing heating systems requires in-depth expertise and is time-consuming, Pipelife offers full design support as part of the solution. With a design team that has more than a decade of design experience and in-depth industry background, almost 300 design projects were completed last year alone. The service saves project installers hours of tedious work.

Prefabricated products can be installed in a shorter time and by fewer people. As construction material costs keep rising, the profit margins for contractors have eroded over the last few years. Prefabrication is a way to address the

inefficiencies that standard installation entails and minimise material waste, helping alleviate the cost increases. The data from already commissioned prefabricated hydronic underfloor heating projects in the Netherlands, Bulgaria and Serbia show impressive cost-efficiency improvements compared to traditional underfloor heating systems.

The overall cost savings are 20-30%. Our completed prefab projects clearly show how stepping away from the standard approach can open up new opportunities in the plumbing and heating sector.

**PIPELIFE** 

T: +353 (0)21 488 4700

E: [ireland@pipelife.com](mailto:ireland@pipelife.com)

[www.pipelife.ie](http://www.pipelife.ie)

## Daikin Altherma 3 Setting the new heat pump standard



Both low and high temperature options available meeting all heating demand requirements



Complete range of highly efficient R-32 heat pumps from 4 - 16kW



Market leading heating and DHW efficiencies, providing COPs up to 5.1 and 3.3 respectively



Smart Control as standard allowing control of your system from your phone or smart speaker



Assorted range of outdoor and indoors units to integrate flawlessly into any new or existing home



Established service partner network all around Ireland trained by Daikin

**Looking to become a trained Daikin installer ?  
Email [training@daikin.ie](mailto:training@daikin.ie) to book a place now**

For more information visit [www.daikin.ie](http://www.daikin.ie)



MANUFACTURER - **DAIKIN**

THE EXPANSION IS PART OF THE COMPANY'S STRATEGY FOR 2025 TO MEET THE GROWING EUROPEAN DEMAND FOR HEAT PUMPS BY INVESTING IN LOCAL PRODUCTION CAPACITY...

## Daikin expands heat pump production and training network

**D**aikin Europe N.V. has announced the expansion of its German heat pump manufacturing base in Göglingen, Germany. The expansion is part of Daikin Europe's strategic management plan for 2025, which aims to meet the growing European demand for heat pumps by investing in local production capacity. Three new production lines will more than triple the existing factory output by 2025.

### HIGHER HEAT PUMP PRODUCTION CAPACITY

Daikin Manufacturing Germany GmbH has been steadily increasing its heat pump production volumes over the past years. To accelerate the expansion of its production capacity in the country, Daikin acquired a neighbouring 22km<sup>2</sup> large plot of land with production and office facilities in Göglingen. Refurbishment and integration of the facilities into the existing production site will allow Daikin's German factory to produce more than three times its current volumes by 2025. The company will be looking for an additional 500 new employees to support its growth plans. "The expansion will enable us to ensure a stable supply for a rapidly growing market," explained Filip De Graeve, Managing Director of Daikin Manufacturing Germany GmbH and Daikin Airconditioning Germany GmbH.



Daikin Europe's heat pump manufacturing base in Göglingen, Germany.

### INNOVATION AND SUPPORT TO THE ENERGY TRANSITION

The annual demand for residential heat pumps is expected to triple by 2025. "It is clear that heat pumps play an important role in the decarbonisation of our homes and businesses," commented Martin Dieryckx, General Manager Daikin Europe N.V. Environmental Research Center. "As a global leader in the design and manufacturing of heat pumps, we are well placed to build the manufacturing capacity needed to support this transition, which is of great importance to Europe's future."

The investment announcement in Germany closely follows similar

announcements about expanding its heat pump factory in Belgium and the construction of a new heat pump factory in Poland. Earlier in 2021, Daikin Europe announced it will boost its R&D activities and is set to open Daikin's global centre for heat pump Research & Development in Ghent, Belgium. Total investments of Daikin Europe in the EMEA region amount to 1.2 billion euros between 2020 and 2025.



T: +353 (0)1 642 3430

E: [heating@daikin.ie](mailto:heating@daikin.ie)

[www.daikin.ie](http://www.daikin.ie)



## Daikin Ireland focuses on installer development

Daikin Ireland has been steadily growing their sustainable home centre network around Ireland. These sustainable "hubs" incorporate product displays on the relevant systems for the Irish market while providing local training centres for new and experienced installers. "Expanding the overall knowledge of renewable heating systems is one of the main objectives going forward in 2023," said Shane McCarthy, Heating Sales Manager at Daikin Ireland. "With dedicated training and showrooms, we hope to make the transition to renewable heating as seamless as possible for both the Irish homeowner and installer." Daikin provides dedicated training for installers on all their systems. If you are interested in attending a Daikin training course, please email [training@daikin.ie](mailto:training@daikin.ie)



# Home heating solutions from the floor up.

Ask for a quote at your local PTS branch or contact the  
PTS Ireland Sales Team at [ptsirelandbelfast@ptsplumbing.co.uk](mailto:ptsirelandbelfast@ptsplumbing.co.uk)



Available from all branches of PTS: • Belfast, Grosvenor Road  
• Belfast, Duncrue • Enniskillen • Lisburn • Derry • Newry • Dublin



## SUPPLIER - PTS

AS THE LEADING UNDERFLOOR HEATING BRAND, PROWARM FINDS A NATURAL HOME IN PTS' STABLE OF CUTTING-EDGE PLUMBING AND HEATING PRODUCT LINES...

## ProWarm - UFH systems for heating pros

With so many options of underfloor heating (UFH) brands on the market, PTS

plumbing and heating merchants understand the confusion in knowing which to use for your upcoming project. That's why it stocks the UK's largest selling brand of UFH, ProWarm.

As a market leader, ProWarm offers great quality products alongside unrivalled customer service and technical support. All systems come with a lifetime warranty with a next day delivery and a 48-hour design service.

### WATER UFH

ProWarm water systems are available for single or multi-rooms, giving the user efficient heating control throughout the home.

The ProWarm PEX-AL-HDPE Pipe, comes with a peace of mind 50-year warranty and, as standard, is 100% oxygen impermeable with a working pressure of 10bar @ 95C.

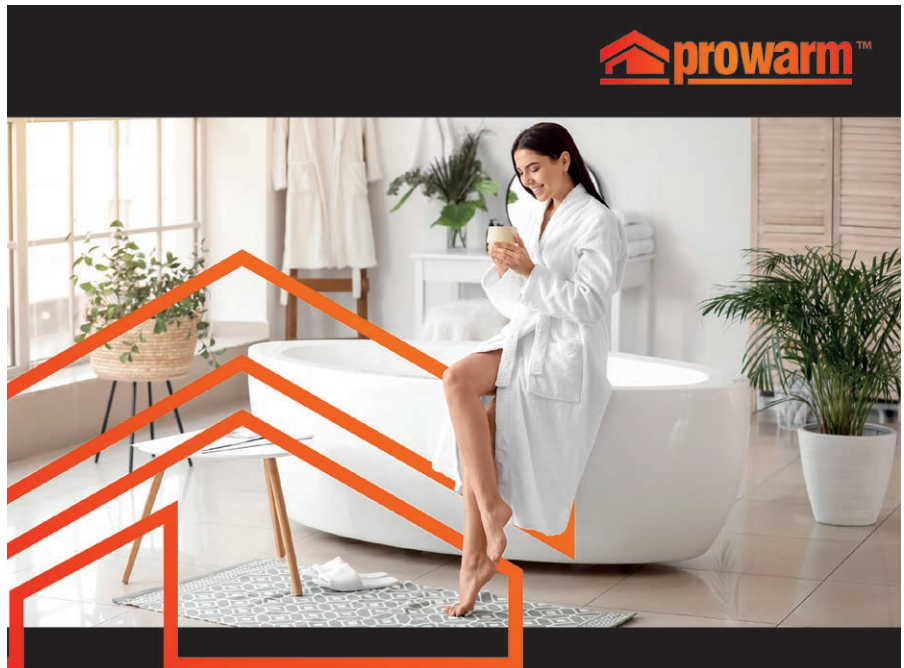
There are also low profile solutions where floor height is paramount and, with the option to space the pipe accordingly, you can easily create high output systems suitable for conservatories or extensions with lots of glass.

Each water underfloor heating kit comes with everything you need straight out of the box, including thermostat, high quality multi-layered pipe (guaranteed for 50 years), 'A' rated Grundfos pump, installation tools, fixings and an instruction manual.

### ELECTRIC UFH

The ProWarm range of electric UFH systems are available for any room scenario, are well suited for various floor coverings such as tile, wood, vinyl or carpet and are extremely quick and easy to install.

ProWarm's top-of-the-range, Teflon-coated, advance insulation system is made with the finest fluoropolymers available. It is also 100% free from



PVC coatings. ProWarm systems are amongst the lightest but strongest available, being only 2mm thick, which means they can be tiled right over if the home user wishes.

The loose cable system is designed for awkward-shaped rooms, perfect for bathrooms and small kitchens, which again work with most floor coverings. There's also an electric in-screed system offering the user a new build solution if water UFH is not an option.

### TECHNICAL ADVICE

ProWarm has an experienced technical support team waiting to take calls from customers.

Three quarters of staff have on-tools experience in the installation of UFH, with technical skills to beat the competition.

The ProWarm design teams consist of experts who can provide quotes using customers' own plans or drawings. In addition to being experts for electric and UFH systems, they are also the most proactive when it comes to advice

on suitable floor coverings, structural sub floors and installation of the chosen systems.

### LIFETIME WARRANTY

ProWarm is the UK's only manufacturer of UFH that offers a full lifetime warranty on their systems when installed as they recommend. For example, this is why buying a ProWarm heating system from the team at PTS offers you complete peace of mind.



Plumbing Trade Supplies

For further information or to ask for a quote, please call into your local PTS branch or contact the PTS Ireland Sales Team at [ptsirelandbelfast@ptsplumbing.co.uk](mailto:ptsirelandbelfast@ptsplumbing.co.uk)



# plumbing & heating AWARDS



IN ASSOCIATION WITH



CLONTARF CASTLE • DUBLIN

 **10.11.23**

## ENTRIES ARE NOW OPEN

WE ARE DELIGHTED TO  
BE BACK IN PERSON  
TO CELEBRATE IN  
CLONTARF CASTLE,  
DUBLIN ON FRIDAY 10  
NOVEMBER 2023!

Ireland's Plumbing & Heating Awards 2023 will recognise the achievements of the top plumbing and heating contractors, consultants, suppliers, people, products, and projects across Ireland.

### HOW TO ENTER

It's easy! Simply request entry forms from the listed categories at: [awards@kmp ltd.co.uk](mailto:awards@kmp ltd.co.uk)

### AWARD CATEGORIES

#### Product Awards

- Innovative Products of the Year

#### Project Awards

- Green Technology Project of the Year
- District Heating Project of the Year
- Domestic Project of the Year
- Commercial Project of the Year

#### Supplier Awards

- Merchant Awards
- Manufacturer of the Year Award
- Distributor of the Year Award

#### Contractor Awards

- Ireland's Plumber of the Year
- Contractor of the Year Awards

#### People Awards

- Apprentice of the Year
- Unsung Hero Award
- Lifetime Achievement

For full details on how to enter, go to [www.plumbingmag.com](http://www.plumbingmag.com)





THE PRESTIGIOUS EVENT IN THE PLUMBING AND HEATING SECTOR WILL BE BACK IN DUBLIN IN NOVEMBER AND YOU WON'T WANT TO MISS IT...

## Entries are now open for Ireland's Plumbing and Heating Awards 2023

We're back! One of the most prestigious events in the plumbing and heating sector in Ireland will be back in Dublin with its first glittery ceremony since the Covid lockdown. Ireland's Plumbing and Heating Awards 2023 will be hosted at Clontarf Castle on Friday, November 10. The event is sponsored by Calor and we are delighted to meet everyone in person once more.

Ireland's Plumbing & Heating Awards 2023 will recognise the achievements of the top plumbing and heating contractors, suppliers, people, products, and projects across Ireland.

There are 13 separate categories up for grabs to celebrate the individuals and companies who are the heart and soul of the plumbing and heating industry. The product and project awards are a testament to the industry's latest emphasis on energy-efficient products and green technologies. The guests will hold their breath to hear the Plumber,

Apprentice and Contractors of the Year being announced. The Unsung Hero Award rewards a person who has gone the extra mile for their community, company, or charity cause, while The Lifetime Achievement Award recognises an individual that has enhanced the plumbing and heating sector through their dedication and tireless hard work.

Following the event, the awards will be reviewed across Ireland's Plumbing and Heating Magazine and its social platforms. So, if your company or someone you know has excelled in the industry in the past two years, please get involved and enter them in this year's awards. Don't miss the opportunity to meet old friends and celebrate the incredible achievements of local professionals, contractors, and supply chain.

*For more information on Ireland's Plumbing and Heating Awards 2023, please contact our team at +44 (0)28 9261 2990 or +353 (0)1 696 8319. E: [awards@kmp ltd.co.uk](mailto:awards@kmp ltd.co.uk)*

### How to enter

Simply request entry forms from the listed categories by sending an email to [awards@kmp ltd.co.uk](mailto:awards@kmp ltd.co.uk)



### Sponsor an award

If you would like to promote your brand to key decision-makers and industry frontrunners, why not sponsor an award? A number of different packages are available. For more information contact Jacqui Fairley at +44 (0)28 9261 2990 or +353 (0)1 696 8319 or email [jacqui@kmp ltd.co.uk](mailto:jacqui@kmp ltd.co.uk).

## METER-TAMPERING RISKS LIVES, WARN TRADE ASSOCIATIONS

» The Scottish and Northern Ireland Plumbing Employers' Federation (SNIPEF) and the campaigning electrical association SELECT say the rise in the cost of living is driving a worrying rise in meter-tampering, with potentially deadly results.



Fiona Hodgson, SNIPEF Chief Executive.

In a joint statement, Fiona Hodgson, Chief Executive of SNIPEF and Alan Wilson, Managing Director of SELECT, said, "It is a distressing sign of the times that an increasing number of consumers are resorting to tampering with their electrical and gas meters to reduce their energy bills.

"Stealing energy in this way is a worrying and illegal practice, often encouraged by widely shared footage on social media. But it risks lives and can have fatal consequences for innocent people close by."

The trade associations alert to the fact that, like all gas and electrical work, interrupting the supply is something that should only ever be dealt with by fully trained and qualified professionals. "We are urging all householders and tradespeople to immediately contact the relevant energy company if they suspect meter tampering has occurred."

[www.snipef.org](http://www.snipef.org)

## NEW MANAGING DIRECTOR AIMS TO CONTINUE GROWTH AT BASSETTS

» Neil Collins has been announced as the new Managing Director of Bassetts, Northern Ireland's largest plumbing and heating merchants. With a strong engineering background and vast experience in leading prominent businesses, the County Down man is no stranger to the plumbing and heating world, having previously been MD for Northern Ireland at Dimplex before becoming Manufacturing Director for Dimplex Group's Heating and Ventilation Division.

"I am delighted to be joining such a well-known and respected company," said the new Bassetts MD. "With such strong foundations already in place, I look forward to leading Bassetts through their ongoing phase of continuous growth."

Neil added, "We may be in business for over 40 years, but that doesn't mean we aren't forward-thinking.

"The opening of our Heating Innovation Centre - the first in NI dedicated to plumbing and heating solutions for self-build projects - reflects the forward-thinking nature that has ensured that Bassetts remains successful. I want to harness that mindset as we aim to grow."

[www.bassetsonline.com](http://www.bassetsonline.com)



New Bassetts MD Neil Collins.

## WARMFLOW'S ZENO AIR SOURCE HEAT PUMPS HELP REDUCE BILLS

» The Warmflow Zeno inverter-driven air source heat pump range is one of the most intelligent and advanced heating systems available. It offers unparalleled efficiency and is more eco-friendly while also being incredibly effective. Only requiring electricity and water connections, the outdoor unit is easy to install and can be situated discreetly outside a house or in the garden. With market-leading SCOPs, the Zeno air source heat pumps boast an ErP A++ rating, helping homeowners reduce their annual home heating bills. Consisting of three single-phase models - 8kW, 12kW and 20kW, the Zeno range operates at high efficiency even when external temperatures are low, making for a cost-effective renewable alternative to traditional off-gas heating methods. Monobloc in design, the Zeno heat pumps are suitable for use with S-Plan and Y-Plan heating control systems and offer simple installation and maintenance.

Contact your local sales manager or phone +44 (0)28 9262 1515 for more information

[www.warmflow.co.uk](http://www.warmflow.co.uk)



MADE IN  
BRITAIN



# smart installers don't cut corners...

**TracPipe®** BY OMEGAFLEX® **GAS** ♡

...and they get the  
job done safer,  
easier and faster!



FREE TRAINING



FREE ON-SITE VISITS



FREE SUPPORT



FREE ON-LINE GUIDES

**Find out more...**

Call +44 (0)1295 67 66 70

Email [eurosales@omegaflex.net](mailto:eurosales@omegaflex.net)

[www.tracpipe.co.uk](http://www.tracpipe.co.uk)

**TracPipe®**  
Flexible Gas Piping by Omega Flex®



 @AristonUK

 /AristonUK

ariston.com

 **ARISTON**  
COMFORT. ALWAYS ON

# THE FUTURE OF SMART, SUSTAINABLE COMFORT

# NUOS PLUS WI-FI

## AIR SOURCE HEAT PUMP WATER HEATER

### 80% ENERGY SAVING

Up to 80% more energy saving than traditional water heaters with same capacity

### PLUG & PLAY

"Plug & Play" monobloc unit - no F-Gas qualifications needed to install the unit

### FAST HEAT UP TIMES

Lowest heating time on the market\*, with superior COP

### ECO-FRIENDLY

134A eco-friendly refrigerant for water temperatures up to 62°C in heat pump mode

\*According to EN 16147 regulation



### SMARTPHONE CONTROL

Manage NUOS Plus Wi-Fi via the Aqua Ariston NET app remotely\*. Benefit from full control via daily programming and consumption reports for even more energy savings.

\* App use optional, main controls available on front panel

**PLUMB-IT**  
HEATING • PLUMBING SUPPLIES

**ELITE HEATING AND PLUMBING SUPPLIES LTD. T/A PLUMB-IT**  
Unit 1A Nangor Road Business Park, Nangor Road, Dublin 12  
Tel: 01 4579030 - E: reception@plumbit.ie - www.plumbit.org  
**24/7 CUSTOMER SERVICE LINE ON +353 (0)1 691 7323**



THE ARISTON NUOS PLUS WIFI, DISTRIBUTED EXCLUSIVELY BY PLUMB-IT IN IRELAND, IS EASY TO INSTALL AND USES RENEWABLE TECHNOLOGY TO PROVIDE ENERGY-EFFICIENT HOT WATER...

## Plumb-It launches Ariston Nuos Plus Wi-Fi and the MRU DeltaSmart Flue gas analyser



Measure flue gas, pressure, and temperature with one device

» The Deltasmart is a handheld unit for modern flue gas analysis from Q Instrument Services which is also distributed by Plumb-It. The device is ideally suited for all control and adjustment work at gas, oil-fired, condensing and wood-burning boilers. It is robust and easy to operate. With the Deltasmart, you can measure O<sub>2</sub>, CO and NO simultaneously (3rd sensor optional). Featuring a powerful Lithium-Ion battery, the device offers 15 hours of continuous operation and Micro-SD, Mini-USB, and Bluetooth for data transfer to your smartphone, tablet, or PC. It is also possible to use an infrared speed printer.

### More hot water, for longer

Heating and plumbing supplier Plumb-It is the only authorised distributor of Ariston gas boilers, cylinders, and renewable products in Ireland. The company has just added another option to their ever-growing portfolio of quality products, the Nuos Plus Wi-Fi air-source heat pump water heater.

The renewable heat pump technology used by the Nuos Plus Wi-Fi converts air into energy for domestic hot water, ensuring energy savings of up to 80% compared to traditional direct cylinders of the same capacity.

#### WARM BATH GUARANTEED

The Nuos Plus Wi-Fi allows for temperatures up to 62°C with the market's most efficient coefficient of performance (COP): 3.14. That is great news for the environment, and homeowners will be also pleased to know that the Nuos Plus

Wi-Fi features the shortest water heating time in its category. The heater's high-quality insulation enables hot water to be kept at the desired temperature for a long time, saving more on energy bills.

#### REMOTE SMARTPHONE CONTROL

The heater's in-built Wi-Fi function connects to the Aqua Ariston Net app and provides ultimate remote control of the water system. The user can program a weekly hot water schedule and consult energy-consumption reports, among other functions.

#### PEACE OF MIND

The Nuos Plus Wi-Fi features anti-Legionella and anti-freezing functions to keep the water healthy and running. Thanks to its "Plug & Play" installation, it is not necessary to have a F-Gas qualification to install the unit.



For more information, contact:

T: +353 (0)1 457 9030

E: paul@plumbit.ie

E: derek@plumbit.ie

E: reception@plumbit.ie



# Make yourself seen

When worksite visibility decreases, the risk of workplace accidents increases. That's why you need hard-working, high-visibility workwear. Ours makes you easier to see at dawn, dusk and during the day.

**Snickers<sup>®</sup>**  
WORKWEAR



FLUORESCENT COLOURS PROVIDE VISIBILITY AT DAWN, DUSK, AND DURING THE DAY, WHILE REFLECTIVE MATERIALS ARE IDEAL FOR DARK CONDITIONS AND HAZARDOUS WORK ENVIRONMENTS...

# Make yourself seen with Snickers Workwear

When worksite visibility decreases, the risk of workplace accidents increases. That's the reason why Snickers works so hard developing and improving their wide range of hard-working, high-vis workwear. Their fluorescent colours make you easier to be seen at dawn, dusk, and during the day, while the manufacturer's reflective materials make it easier to see you in dim and dark conditions. This is all about staying visible, so you can stay safe.

## ORANGE IS THE COLD YELLOW

What's the difference between fluorescent orange and fluorescent yellow? Remember, this is all about increasing visibility, and it is usually a lot easier to spot someone wearing a neon yellow garment than an orange one. That is because yellow has a higher luminance (or appears brighter to the naked eye). However, in a snowy winter landscape, the

luminance of yellow is outdone by the higher contrast of orange – especially against a background of white. So, in bright snowy weather you will want to dress in orange, and in most other cases yellow will do the trick.

## STAY VISIBLE, STAY SAFE

Being instantly seen and discovered can be a lifesaver in hazardous work environments. High-visibility clothing is a vital part of personal protection when working in dim light conditions. Snickers' collection of high-vis garments offers a diverse choice of functionality and comfort.



Contact your Hultafors Group Ireland (Snickers Workwear) Area Sales Manager for further information about the range. Call: +353 (0)1 409 8400 or email: [info@hultaforsgroup.ie](mailto:info@hultaforsgroup.ie)



“High-visibility clothing is a vital part of personal protection when working in dim light conditions.”

# MacBlair Plumbing

Plumbing Heating Bathrooms

Find your LOCAL branch at

**MacBlair.com**



## Branch Network

### Antrim

Springfarm Ind Estate  
Antrim BT41 4NT  
028 9448 1352

### Belfast Boucher

4 Balmoral Road  
Belfast BT12 6QA  
028 9055 1380

### Coleraine

5 Loguestown Ind Estate  
Coleraine BT52 2NS  
028 7034 4422

### Eglinton

15 Killylane Road  
L'Derry BT47 3DW  
028 7181 3976

### Bangor

70 Balloo Road  
Bangor BT19 7PG  
028 9127 8939

### Belfast Duncrue

42-44 Duncrue Crescent  
Belfast BT3 9BW  
028 9037 3650

### Cookstown

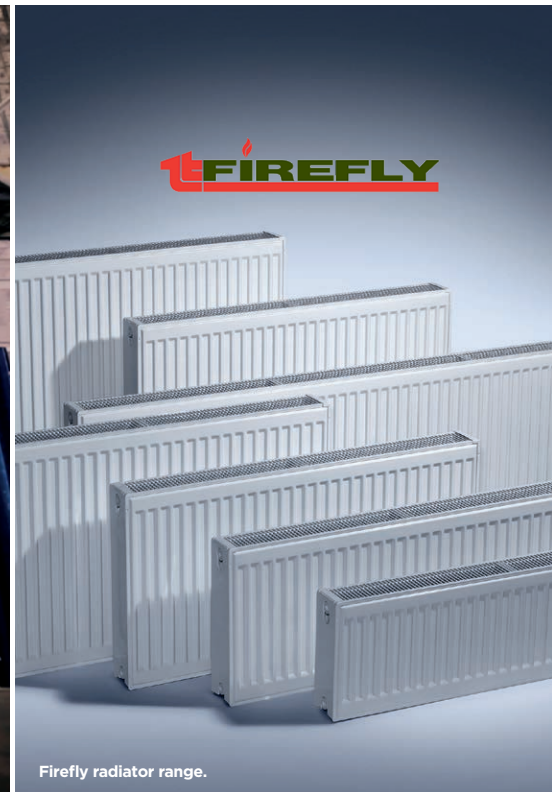
Sandholes Road  
Cookstown BT80 9AR  
028 8676 2211







ThermTek - Firefly radiator distributors.



Firefly radiator range.

FOR OVER 30 YEARS THE FIREFLY PANEL RADIATOR HAS BEEN THE HEAT EMITTER OF CHOICE FOR THE PLUMBING AND HEATING INDUSTRY...

## Firefly - the plumbers' choice

MacBlair Plumbing is heating up the market with a full range of value-for-money radiators. Firefly radiators are noted for their high quality, high performance, aesthetic design and easy installation.

Manufactured to all international standards including BS EN442 and ISO 9001, is it any wonder installers are warming up to a change?

The radiator's low water content combined with modern welding technology and maximum metal gauge material creates a highly efficient product with the capability of a fast heat-up time. Modern 33.3 mm pitch water channel design is used on all models. All radiators are tested to 13 bar, exceeding the operating pressure of 10 bar. Anti-corrosion treatment is applied in the manufacturing process prior to primer paint application, and finally, a hard-baked powder paint coating is applied to ensure a long-lasting perfect finish.

The Firefly radiator range is available in heights of 300, 400, 500, 600, 700 and 900mm and in lengths from 400mm to 3,000mm, so no need to compromise -

Firefly has the right size radiator for any room or application. Uniform packaging with side cartons, corrugated cardboard and shrinkable foil, guards against impact during storage, transport and installation. The radiator carries a no quibble 10-year warranty.

Firefly has a vast stock of radiators. Combined with an extensive logistics operation, they ensure consistent product availability for plumbers, installers and construction sites through their stockists. The Firefly radiators' sales volume and market share ensure that the brand is highly competitive and constantly outperforms the market in value for their end-users.

Jim Barry, from ThermTek (Firefly's Ireland distributors) said, "Over the last number of years the industry has been challenged with a number of inflationary factors that have resulted in increased costs. Despite this, we have managed to improve the competitiveness of the Firefly range and this is reflected in MacBlair's radiator programme offering."

"Our partnership with the MacBlair plumbing network across Northern Ireland

has been significant for Firefly radiators and, as we increase market share together, we continue to be committed to supporting the end-user with a high quality, competitive product backed by large inventories and a dedicated team."

### Firefly features:

- Extensive radiator range
- Radiators tested to 13 bar, exceeding the operating pressure of 10 bar
- Low water content ensures fast heat-up time
- Anti-corrosion treatment
- 10-year warranty
- EN 442 Certified



Contact your local MacBlair Plumbing Merchant for more information about the radiator range from Firefly. Visit [www.macblair.com](http://www.macblair.com)



water passion

CALPEDA LAUNCHES  
**META SMALL!**

**shhh,**  
**super quiet**  
**fanless design!**

**APPLICATIONS:**



**domestic booster set**



**irrigation system**



**residential booster set**

**SELF PRIMING BOOSTER SET**  
**EASY TO INSTALL AND PLUG AND PLAY**

Equipped with a built-in frequency converter  
a pressure sensor on the discharge side,  
a built-in pressure vessel in the pump casing  
and a non-return valve on the suction side

**Mèta small is equipped with an**  
**asynchronous motor without ventilation**

**Features:**

- fanless design
- built-in frequency converter
- built-in pressure vessel
- constant pressure
- high efficiency asynchronous motor
- motor power control
- no hydraulic losses due to measuring devices
- voltage and current control
- monitoring of the maximum starting current

For further information please contact:

Calpeda Pumps (Ireland) Ltd.  
Unit 5, Old Quarry Campus,  
Blanchardstown, D15 Y4EK

**Tel: +353- (0)1-861 2200**

**Fax: +353-(0)1-861 2203**

**E-mail: [info@calpedaireland.com](mailto:info@calpedaireland.com)**

[www.calpeda.com](http://www.calpeda.com)



**Plug and Play Solution**



**Energy Efficiency**

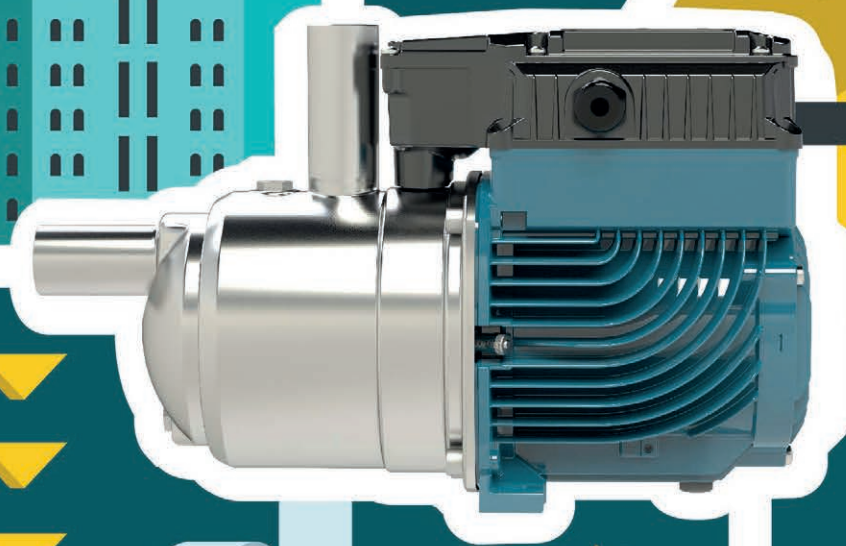


**Compact Design**





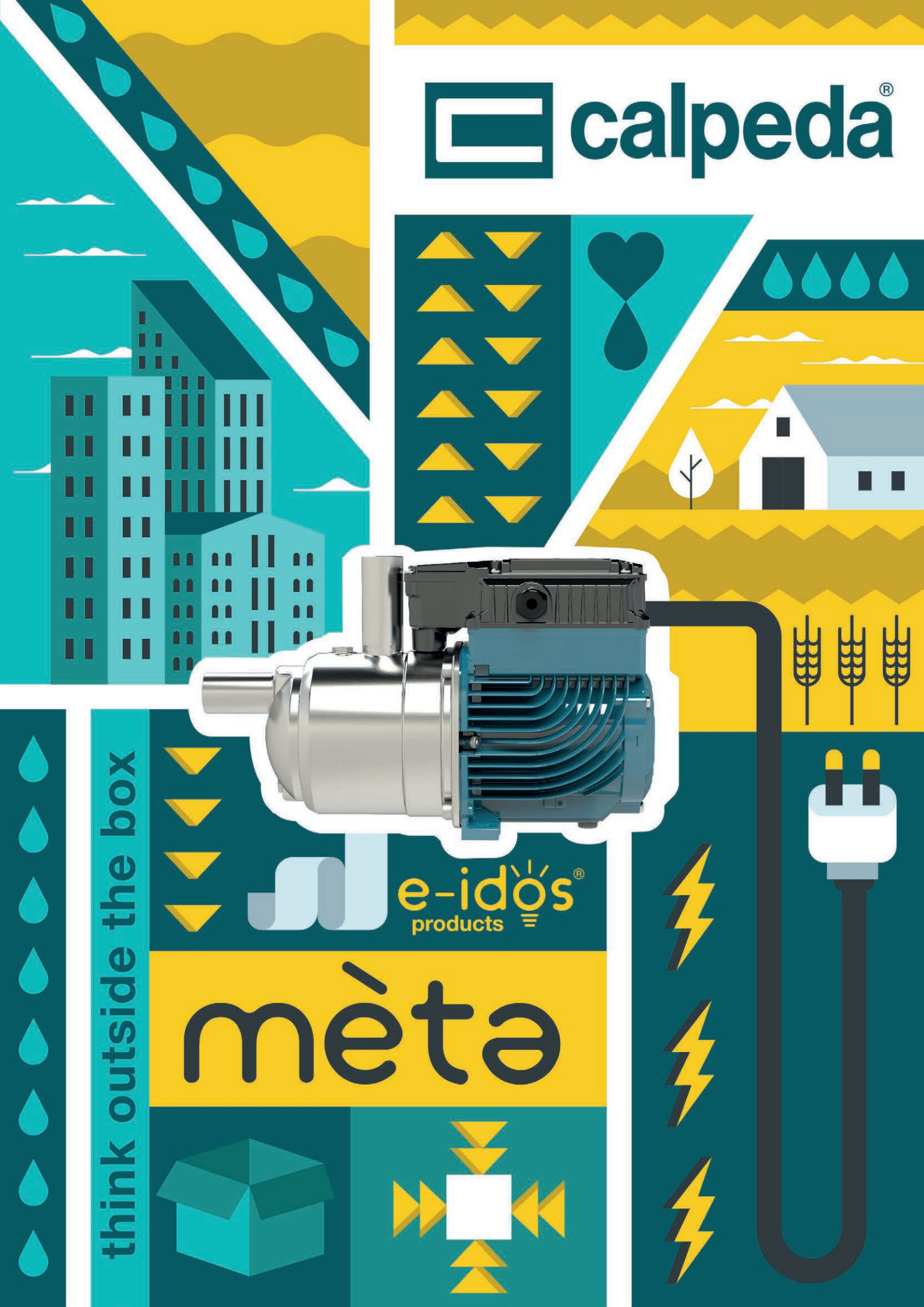
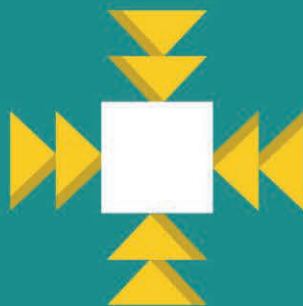
 calpeda®



think outside the box

 e-idos®  
products

méta





**BOSCH**

# Making home heating greener

With the Government's decarbonisation target to achieve net zero by 2050, we're here to support you.

We're committed to helping you and your customers choose the right product today, while also providing you with the necessary training and knowledge to prepare your business for the future.

Visit our website to discover the five key future technologies  
[worcester-bosch.co.uk/future-industry](https://worcester-bosch.co.uk/future-industry)

